

THE BLUEBELLS AT TANTON FIELDS

STOKESLEY

A STUNNING COLLECTION OF
3, 4 & 5 BEDROOM HOMES



TILIA
HOMES

Welcome to The Bluebells at Tanton Fields

This charming collection of three, four and five bedroom homes are situated on the banks of River Leven, Stokesley, in the Hambleton district of North Yorkshire. Surrounded by local amenities and rural countryside, it's a great place to live, work and enjoy life.



Education

With its close proximity to local schools, families will benefit from the ideal location of The Bluebells at Tanton Fields.

Stokesley Primary Academy

Just a 4-minute drive from the development, Stokesley Primary Academy welcomes children between the ages of 2-11 years. With an Ofsted rating of 'Good', this school provides many facilities, including before and after school care and a nursery.

Stokesley School and Sixth Form College

Stokesley School and Sixth Form College is an age 11-18 comprehensive school at the heart of Stokesley. This Ofsted rated 'Good' school offers the Duke of Edinburgh's award scheme as well as over 40 extra-curricular clubs and activities.

Marwood Church of England V C Infant School

This 'Good' Ofsted rated Infant school is just a 6-minute drive from the development and caters for children ages 5-7. It offers children a variety of extra-curricular activities such as fitness clubs, yoga and choir club, as well as morning and afternoon care and holiday club.



Although the schools listed above are nearby, we cannot guarantee admission. Car travel times taken from [google.co.uk/maps](https://www.google.co.uk/maps) and are approximate only.



Connections

Good transport links to nearby towns, cities and further afield.



20
min

Middlesbrough

11.1 miles

50
min

Sunderland

37.1 miles

1 4
hr min

York

43.1 miles

Destinations by car



21
min

Middlesbrough

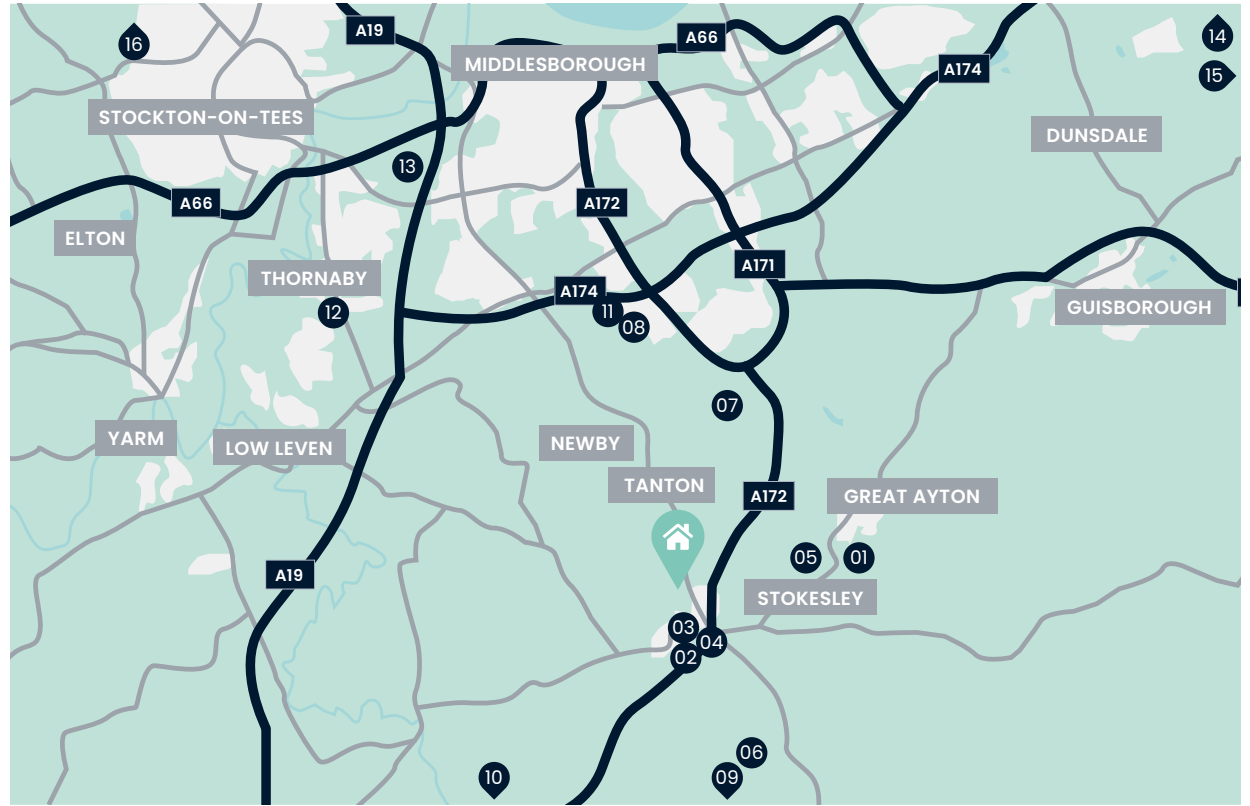
1 41
hr min

Newcastle upon Tyne

1 46
hr min

York

Destinations by train
Great Ayton Station



Your nearest transport links



Great Ayton



A172



Teeside
International
Airport

Up to 2 Miles

01. Stokesley Veterinary Practice
02. Stokesley Globe Community Library
03. Stokesley School
04. Stokesley Leisure Centre

Up to 5 Miles

05. Angrove Country Park
06. Emmersons Riding School
07. Middlesbrough Golf Club
08. Tesco Extra

Up to 10 Miles

09. Lord Stones Country Park
10. Whorlton Castle
11. Newham Grange Farm
12. Crazy Corner Adventure Play Centre

Up to 25 Miles

13. Teeside Shopping Centre
14. Redcar Racecourse
15. Marske By The Sea Beach
16. University Hospital of North Tees



The benefits of buying new

All our homes also come with a '2-year Tilia Homes Customer Care Warranty' and a further '8-year NHBC Warranty' for added peace of mind.



Energy-Efficient

new homes are built to the latest specifications and standards meaning a more energy-efficient home.



No Chain

you are not buying into a chain. This means a faster, easier buying process without the hassle.



Great Schemes

benefit from schemes only available when buying a new build, such as our Part Exchange and Smooth Move schemes.



Personalise your home

you can make changes to your home by choosing from our extensive list of finishing touches subject to build stage.



Low Maintenance

with the latest regulations and specifications it's unlikely you'll need to worry about repairs for a while. New homes also include a 10-year NHBC warranty to cover structural defects.



It's Brand New

be the first to live in the property. It's brand new – and all yours!

Moving Schemes

Tilia Homes likes to make sure that you can move into your new dream home, whatever your situation. We can help you overcome almost any obstacle that you face as a new homebuyer.



Part Exchange

If you want to ensure a smooth and easy move to your new home by Tilia Homes, you may wish to consider our Part Exchange scheme.



Smooth Move

We'll do all we can to ensure that your existing home is sold quickly, at the best possible price – and we'll pay the estate agent's fees.



Customer Commitment

Our aim is to do our best to take care of everything.

From carefully choosing the ideal location for our new community to designing and building homes that fit perfectly into the natural environment.

We'll make sure you have all the information you need every step of the way, whether that's letting you know what's happening with your sale or introducing you to every detail of your new home – we know homebuilding doesn't stop once you've moved in.

We pride ourselves on being there for our customers throughout the buying and selling process – and beyond.

Helping build homes and communities we can all be proud of, for many years to come.



Tilia Homes in their efforts to improve designs reserve the right to alter site plans, floorplans, elevations and specifications without notice. All lifestyle and location imagery used within this brochure is indicative only. Maps shown are not to scale. Times, distances and directions are approximate only and are taken from [google.co.uk/maps](https://www.google.co.uk/maps) and [nationalrail.co.uk](https://www.nationalrail.co.uk). Information is correct at the time of going to print. Please see the development page on our website for further details. For terms and conditions on our schemes and incentives including Part Exchange or Smooth Move, go to tiliahomes.co.uk. Please speak to your Sales Executive for further details. April 2023.

THE BLUEBELLS AT TANTON FIELDS

STOKESLEY

Our charming development of 3, 4 & 5 bedroom new build homes in Stokesley, North Yorkshire. Set on the banks of the River Leven, yet just 10 miles* to Middlesbrough town centre.



2 Bedroom Homes

● The Horsham

3 Bedroom Homes

● The Holmewood

● The Northwood

● The Oakwood

4 Bedroom Homes

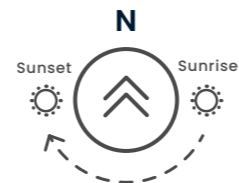
● The Mapleford

● The Oakford

● The Sten U

5 Bedroom Homes

● The Kenilworth



- - Affordable Homes
- BCP - Bin Collection Point
- LEAP - Local Equipped Area for Play
- SS - Sub-Station
- V - Visitor Parking

The development layout does not show details of gradients of land, boundary treatments, local authority street lighting or landscaping. It is our intention to build in accordance with this layout. However, there may be occasions when the house designs, boundaries, landscaping and positions of roads and footpaths change as the development proceeds. The location of affordable homes is indicative and subject to change, properties coloured blue will remain affordable housing tenure and are not available for general sale. The remaining homes on the development are available for open market sale to purchasers, who could be private individuals or another type of purchaser (for example local authorities, housing associations or other commercial landlords), and therefore the mix of tenures on a development may change. Site plan is not to scale. Please speak to our Sales Executives for more details. July 2024.

The Thornton

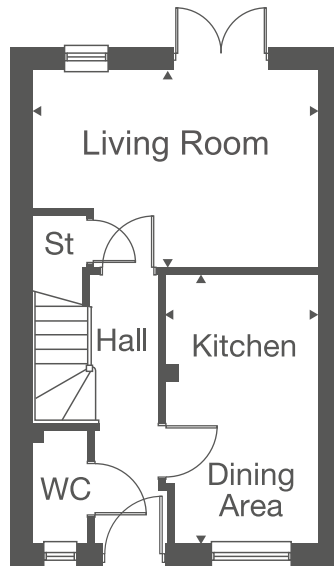
2 Bedroom Home



This computer generated image is for illustrative purposes only. Images may include optional upgrades at additional cost. Its purpose is to give a feel for the development, not an accurate description of each property. External materials, finishes, landscaping and the position of garages (where provided), may vary throughout the development. Properties may also be built handed (mirror image). Please ask for further details.

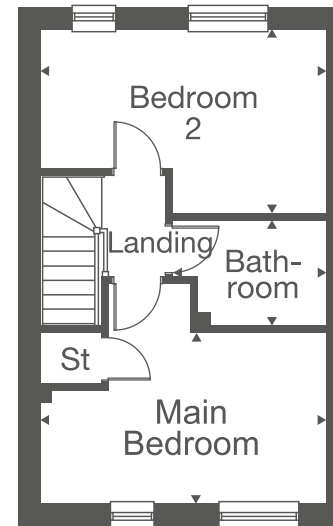


A delightful two bedroom home with an open-plan kitchen/dining area and a living room with double doors leading out to the garden. Upstairs is a spacious main bedroom and second bedroom which both share a family bathroom.



Ground Floor

Kitchen/Dining Area	4.36m x 2.47m 14'3" x 8'1"
Living Room	4.61m x 3.21m 15'1" x 10'6"



First Floor

Main Bedroom	4.61m x 2.78m 15'1" x 9'1"
Bedroom 2	4.61m x 2.97m 15'1" x 9'8"
Bathroom	2.47m x 1.71m 8'1" x 5'7"

St – Store WC – Cloakroom

The floorplans depict a typical layout of this housetype. All dimensions are + or – 50mm and are not shown to scale. They are not intended to be used for carpet sizes, appliance sizes or items of furniture. These floorplans are a guide only and may be subject to change. Total area is approximate. For exact plot specification, details of external and internal finishes, dimensions and floorplan differences consult our Sales Executive. October 2023.

The Holmewood

3 Bedroom Home



This computer generated image is for illustrative purposes only. Images may include optional upgrades at additional cost. Its purpose is to give a feel for the development, not an accurate description of each property. External materials, finishes, landscaping and the position of garages (where provided), may vary throughout the development. Properties may also be built handed (mirror image). Please ask for further details.

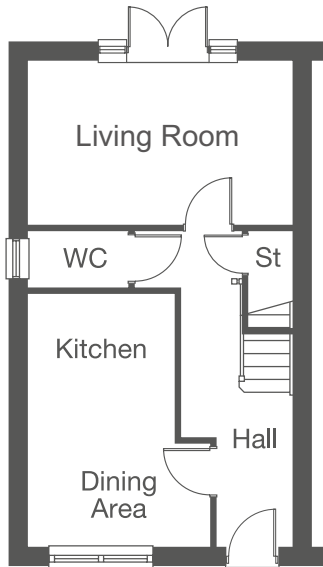


The Holmewood

3 Bedroom Home

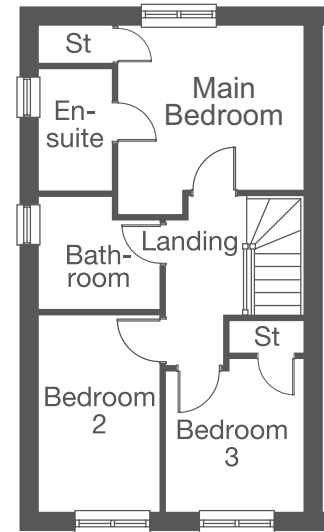
Total Area 906 sq. ft.

A delightful 3 bedroom home with a kitchen/dining area and a spacious living room and double doors to the garden. Upstairs, the luxurious bedroom includes a sizeable en suite, whilst the two additional bedrooms have access to the family bathroom.



Ground Floor

Kitchen	4.56m x 3.29m max 14'9" x 10'7" max
Living Room	4.74m x 2.96m 15'5" x 9'7"



First Floor

Main Bedroom	3.40m max x 2.63m max 11'1" max x 8'6" max
Bedroom 2	3.55m x 2.18m 11'6" x 7'1"
Bedroom 3	2.76m max x 2.47m max 9'0" max x 8'1" max

AC – Airing Cupboard B – Boiler - - - - Reduced Head Height ☒ – Rooflight St – Store WC – Cloakroom

The floorplans depict a typical layout of this housetype. All dimensions are + or – 50mm and are not shown to scale. They are not intended to be used for carpet sizes, appliance sizes or items of furniture. These floorplans are a guide only and may be subject to change. Total area is approximate. For exact plot specification, details of external and internal finishes, dimensions and floorplan differences consult our Sales Executive. October 2023.



The Oakwood

3 Bedroom Home



This computer generated image is for illustrative purposes only. Images may include optional upgrades at additional cost. Its purpose is to give a feel for the development, not an accurate description of each property. External materials, finishes, landscaping and the position of garages (where provided), may vary throughout the development. Properties may also be built handed (mirror image). Please ask for further details.

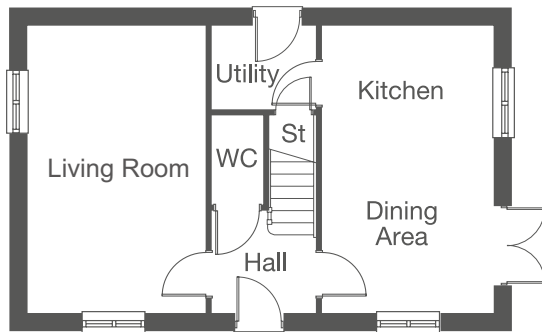


The Oakwood

3 Bedroom Home

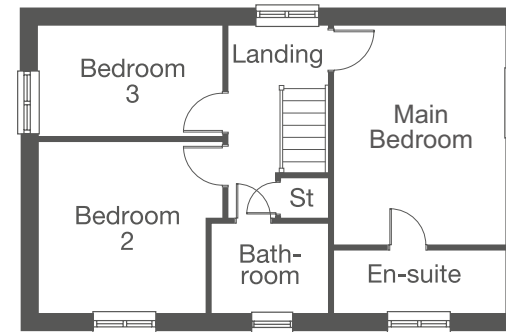
Total Area 1,001 sq. ft.

A generous 3 bedroom home with a spacious dual-aspect living room, downstairs cloakroom and double doors leading to the garden from the kitchen/diner. Upstairs features a main bedroom and en suite with two other bedrooms, plus a family bathroom.



Ground Floor

Kitchen/Dining Area	5.52m x 3.27m 18'1" x 10'7"
Living Room	5.52m x 3.42m 18'1" x 11'2"
Utility	1.98m x 1.62m 6'5" x 5'3"



First Floor

Main Bedroom	4.19m x 3.27m max 13'7" x 10'7" max
Bedroom 2	3.79m x 3.17m min 12'4" x 10'4" min
Bedroom 3	3.52m x 2.28m 11'5" x 7'5"

AC – Airing Cupboard B – Boiler - - - - Reduced Head Height ☒ – Rooflight St – Store WC – Cloakroom

The floorplans depict a typical layout of this housetype. All dimensions are + or – 50mm and are not shown to scale. They are not intended to be used for carpet sizes, appliance sizes or items of furniture. These floorplans are a guide only and may be subject to change. Total area is approximate. For exact plot specification, details of external and internal finishes, dimensions and floorplan differences consult our Sales Executive. October 2023.



The Northwood

3 Bedroom Home



This computer generated image is for illustrative purposes only. Images may include optional upgrades at additional cost. Its purpose is to give a feel for the development, not an accurate description of each property. External materials, finishes, landscaping and the position of garages (where provided), may vary throughout the development. Properties may also be built handed (mirror image). Please ask for further details.

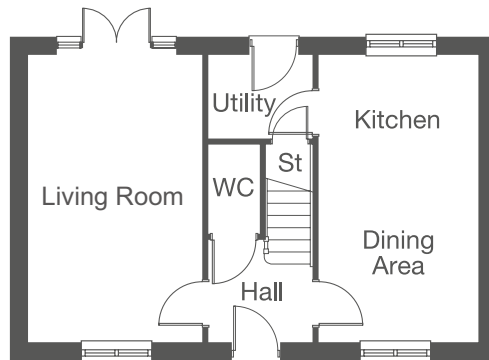


The Northwood

3 Bedroom Home

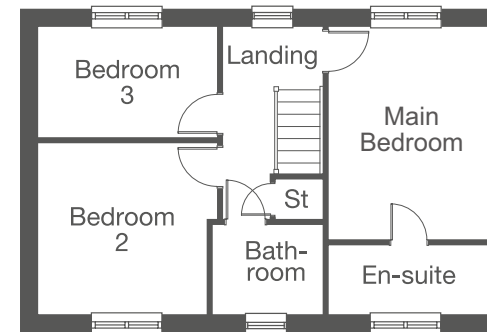
Total Area 1,001 sq. ft.

A delightful 3 bedroom home with a spacious dual-aspect living room, kitchen/diner and separate utility room downstairs, whilst upstairs comprises of a large main bedroom and en suite, plus two further bedrooms.



Ground Floor

Kitchen/Dining Area	6.13m x 2.91m 20'10" x 9'5"
Living Room	6.13m x 3.28m 20'10" x 10'7"
Utility	1.99m x 1.62m 6'5" x 5'3"



First Floor

Main Bedroom	3.42m x 3.05m max 11'2" x 10'0" max
Bedroom 2	3.28m x 3.21m min 10'7" x 10'5" min
Bedroom 3	3.41m x 2.11m 11'2" x 6'9"

AC – Airing Cupboard B – Boiler - - - - Reduced Head Height ☒ – Rooflight St – Store WC – Cloakroom

The floorplans depict a typical layout of this housetype. All dimensions are + or – 50mm and are not shown to scale. They are not intended to be used for carpet sizes, appliance sizes or items of furniture. These floorplans are a guide only and may be subject to change. Total area is approximate. For exact plot specification, details of external and internal finishes, dimensions and floorplan differences consult our Sales Executive. October 2023.

The Sten U

4 Bedroom Home



This computer generated image is for illustrative purposes only. Images may include optional upgrades at additional cost. Its purpose is to give a feel for the development, not an accurate description of each property. External materials, finishes, landscaping and the position of garages (where provided), may vary throughout the development. Properties may also be built handed (mirror image). Please ask for further details.

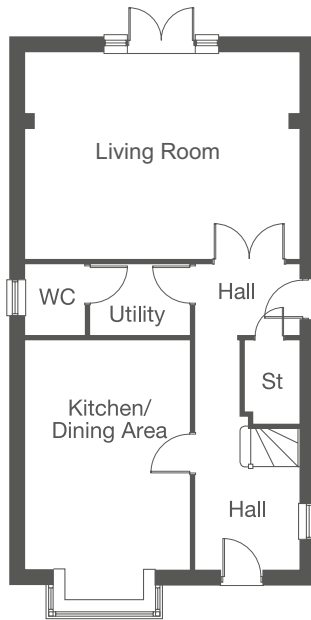


The Sten U

4 Bedroom Home

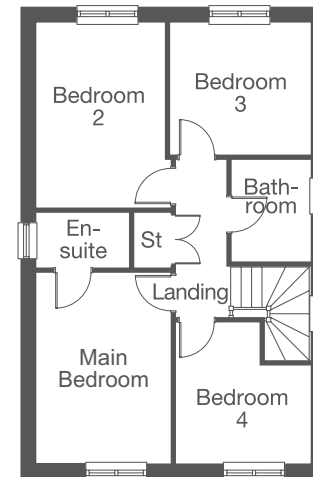
Total Area 1,350 sq. ft.

A large 4 bedroom family home featuring a bay window in the kitchen/dining area, plus bi-fold doors leading to the garden from the spacious living room. Upstairs there is the main bedroom and en suite, plus three additional bedrooms and the family bathroom.



Ground Floor

Kitchen/Dining Area	4.96m min x 3.59m max 16'2" min x 11'7" max
Living Room	5.92m x 4.48m 19'4" x 14'6"
Utility	2.19m x 1.55m 7'1" x 5'0"



First Floor

Main Bedroom	4.14m x 2.92m 13'5" x 9'5"
Bedroom 2	4.00m x 2.79m min 13'1" x 9'1" min
Bedroom 3	3.04m x 2.86m 9'9" x 9'3"
Bedroom 4	3.09m max x 2.94m max 10'1" max x 9'6" max

AC – Airing Cupboard B – Boiler - - - - Reduced Head Height ☒ – Rooflight St – Store WC – Cloakroom

The floorplans depict a typical layout of this housetype. All dimensions are + or – 50mm and are not shown to scale. They are not intended to be used for carpet sizes, appliance sizes or items of furniture. These floorplans are a guide only and may be subject to change. Total area is approximate. For exact plot specification, details of external and internal finishes, dimensions and floorplan differences consult our Sales Executive. October 2023.



The Mapleford

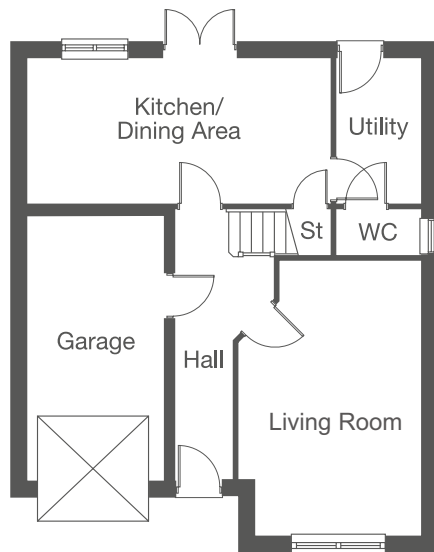
4 Bedroom Home



This computer generated image is for illustrative purposes only. Images may include optional upgrades at additional cost. Its purpose is to give a feel for the development, not an accurate description of each property. External materials, finishes, landscaping and the position of garages (where provided), may vary throughout the development. Properties may also be built handed (mirror image). Please ask for further details.

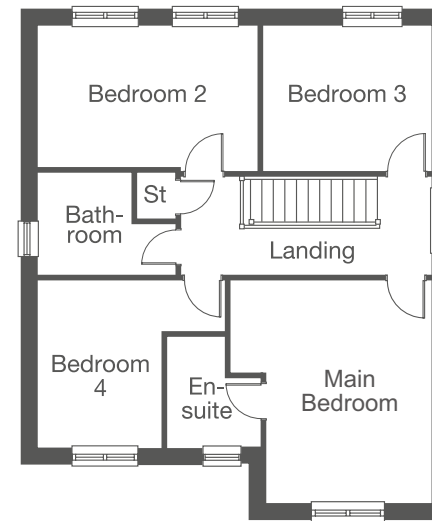


A charming 4 bedroom home featuring a spacious living room, a kitchen/dining area with doors leading out to the garden and a downstairs cloakroom. The upstairs has the main bedroom with en suite, plus 3 further bedrooms and the family bathroom.



Ground Floor

Kitchen/Dining Area	6.15m x 2.95m 20'1" min x 9'6"
Living Room	5.55m max x 3.68m max 18'2" max x 12'0" max
Utility	2.95m x 1.71m 9'6" x 5'6"



First Floor

Main Bedroom	4.50m x 3.35m 14'7" x 10'9"
Bedroom 2	4.46m x 2.95m 14'6" x 9'6"
Bedroom 3	3.40m x 2.95m 11'1" x 9'6"
Bedroom 4	3.38m max x 2.51m min 11'0" max x 8'2" min

AC – Airing Cupboard B – Boiler - - - - Reduced Head Height ☒ – Rooflight St – Store WC – Cloakroom

The floorplans depict a typical layout of this housetype. All dimensions are + or – 50mm and are not shown to scale. They are not intended to be used for carpet sizes, appliance sizes or items of furniture. These floorplans are a guide only and may be subject to change. Total area is approximate. For exact plot specification, details of external and internal finishes, dimensions and floorplan differences consult our Sales Executive. October 2023.

The Oakford

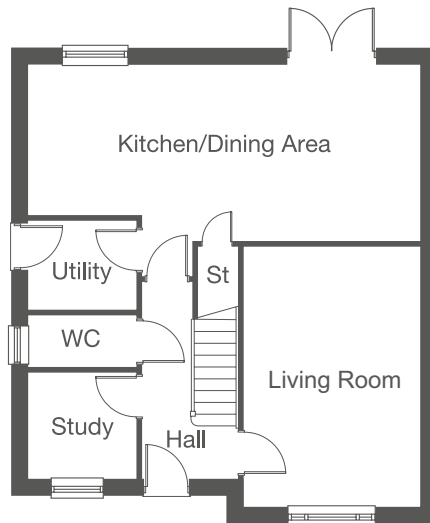
4 Bedroom Home



This computer generated image is for illustrative purposes only. Images may include optional upgrades at additional cost. Its purpose is to give a feel for the development, not an accurate description of each property. External materials, finishes, landscaping and the position of garages (where provided), may vary throughout the development. Properties may also be built handed (mirror image). Please ask for further details.

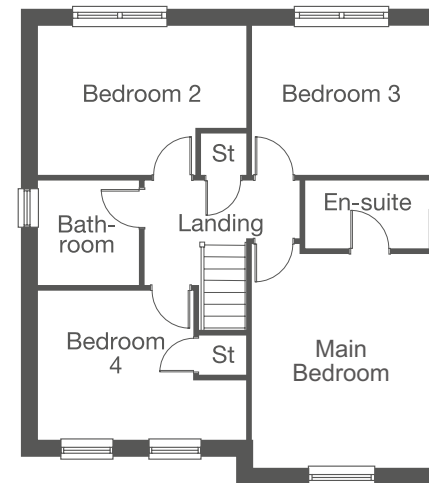


A lovely 4 bedroom home with a social kitchen/dining area at the rear, and a large living room at the front. Upstairs there are 4 good-sized bedrooms, one being the main with an en suite, plus the family bathroom.



Ground Floor

Kitchen/Dining Area	7.95m x 3.65m min 26'0" min x 11'6" min
Living Room	5.27m x 3.57m 17'2" x 11'7"
Utility	2.21m x 1.83m 7'2" x 6'0"



First Floor

Main Bedroom	4.43m x 3.62m 14'2" x 11'8"
Bedroom 2	4.24m max x 3.03m max 13'9" max x 9'9" max
Bedroom 3	3.62m x 3.03m 11'8" x 9'9"
Bedroom 4	4.24m max x 3.04m max 13'9" max x 9'9" max

AC – Airing Cupboard B – Boiler - - - - Reduced Head Height ☒ – Rooflight St – Store WC – Cloakroom

The floorplans depict a typical layout of this housetype. All dimensions are + or – 50mm and are not shown to scale. They are not intended to be used for carpet sizes, appliance sizes or items of furniture. These floorplans are a guide only and may be subject to change. Total area is approximate. For exact plot specification, details of external and internal finishes, dimensions and floorplan differences consult our Sales Executive. October 2023.

The Kenilworth

5 Bedroom Home



This computer generated image is for illustrative purposes only. Images may include optional upgrades at additional cost. Its purpose is to give a feel for the development, not an accurate description of each property. External materials, finishes, landscaping and the position of garages (where provided), may vary throughout the development. Properties may also be built handed (mirror image). Please ask for further details.

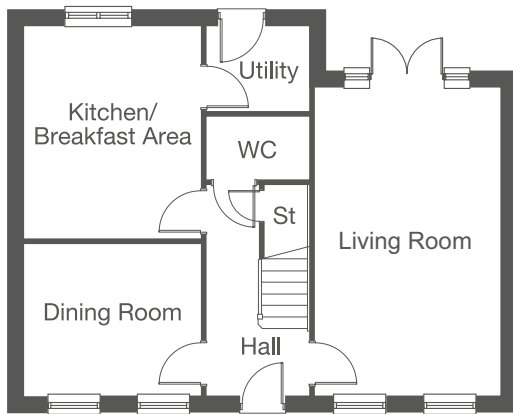


The Kenilworth

5 Bedroom Home

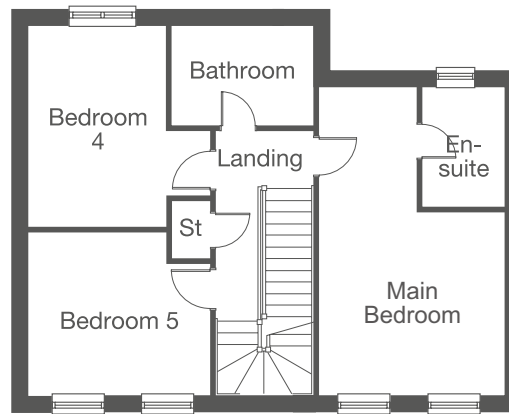
Total Area 1897 sq. ft.

A large 5 bedroom home over 3 floors with a kitchen/breakfast area, separate living room, dining room and utility room downstairs. On the first floor you will find the main bedroom with en suite, family bathroom and two further bedrooms, whilst the top floor features the two final bedrooms and another bathroom.



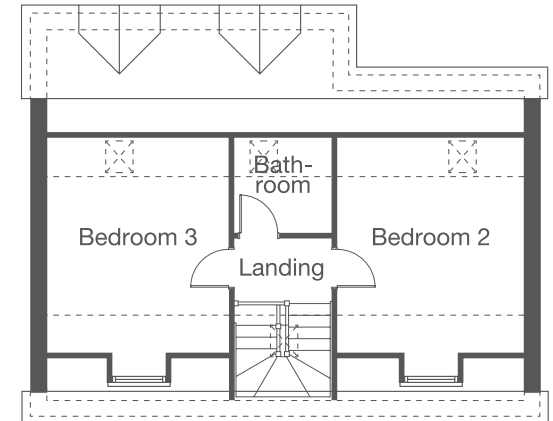
Ground Floor

Kitchen/Breakfast Area	4.28m x 3.52m		14'0" x 11'5"
Living Room	6.60m x 3.69m		21'6" x 12'1"
Dining Room	3.52m x 3.05m		11'5" x 9'10"
Utility	2.08m x 1.72m		6'8" x 5'6"



First Floor

Main Bedroom	6.18m x 3.78m max		20'3" x 12'4" max
Bedroom 4	4.05m x 2.77m min		13'3" x 9'1" min
Bedroom 5	3.69m max x 3.27m		12'1" max x 10'7"



Second Floor

Bedroom 2	4.25m x 3.74m		13'9" x 12'3"
Bedroom 3	4.25m x 3.64m		13'9" x 11'9"

AC – Airing Cupboard B – Boiler - - - - Reduced Head Height ☒ – Rooflight St – Store WC – Cloakroom

The floorplans depict a typical layout of this housetype. All dimensions are + or – 50mm and are not shown to scale. They are not intended to be used for carpet sizes, appliance sizes or items of furniture. These floorplans are a guide only and may be subject to change. Total area is approximate. For exact plot specification, details of external and internal finishes, dimensions and floorplan differences consult our Sales Executive. February 2024.



The Bluebells at Tanton Fields
The Firs
Stokesley
North Yorkshire
TS9 5FU

Find us using what3words
///motivations.onwards.increment

01642 037 251
tantonfields.sales@tiliahomes.co.uk
tiliahomes.co.uk

