

LANDIMORE PARK

HARDINGSTONE

A STUNNING COLLECTION OF
2, 3, 4 & 5 BEDROOM HOMES



TILIA
HOMES

Welcome to Landimore Park

This beautiful collection of two, three, four and five bedroom homes in Hardingstone, on the outskirts of Northampton, offers the perfect base for modern family life. Sympathetically designed to complement the local vernacular and set around attractively landscaped open space, these homes have been built with contemporary style and connectivity in mind, and form the beginning of a desirable new community.



Education

Landimore Park is situated within minutes of a fantastic selection of local schools that cater for primary, secondary and sixth form students.

Preston Hedge's Primary School

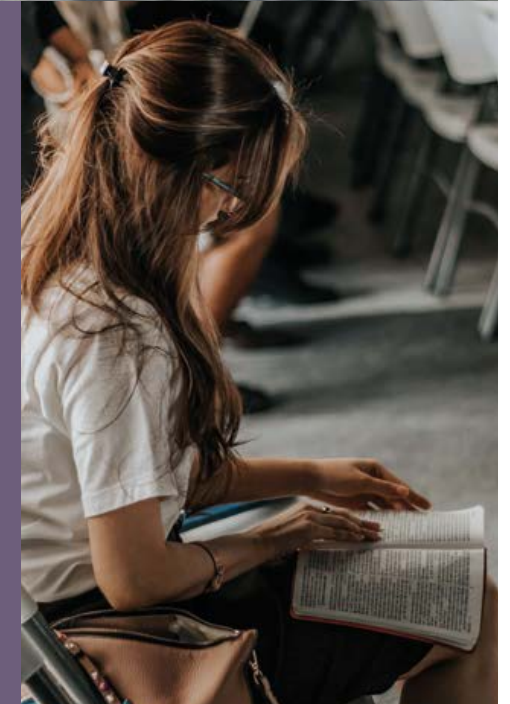
This large two-form entry primary school is located less than a mile away. It operates with a philosophy of 'fun, creativity and achievement' and has been rated 'Outstanding' by Ofsted.

Caroline Chisholm School

Positioned within a mile of Landimore Park, this popular primary, secondary and sixth form strives to make learning enjoyable for all students, from reception through to A-Level.

Northampton College

Offering a wide range of courses and set within state-of-the-art facilities, Northampton College prides itself on being one of the leading colleges in the country.



Although the schools listed above are nearby, we cannot guarantee admission.



Connections

Good transport links to nearby towns, cities and further afield.



8 min

Northampton Town Centre
3 miles

27 min

Milton Keynes
15.2 miles

46 min

Royal Leamington Spa
37.2 miles



21 min

Rugby

55 min

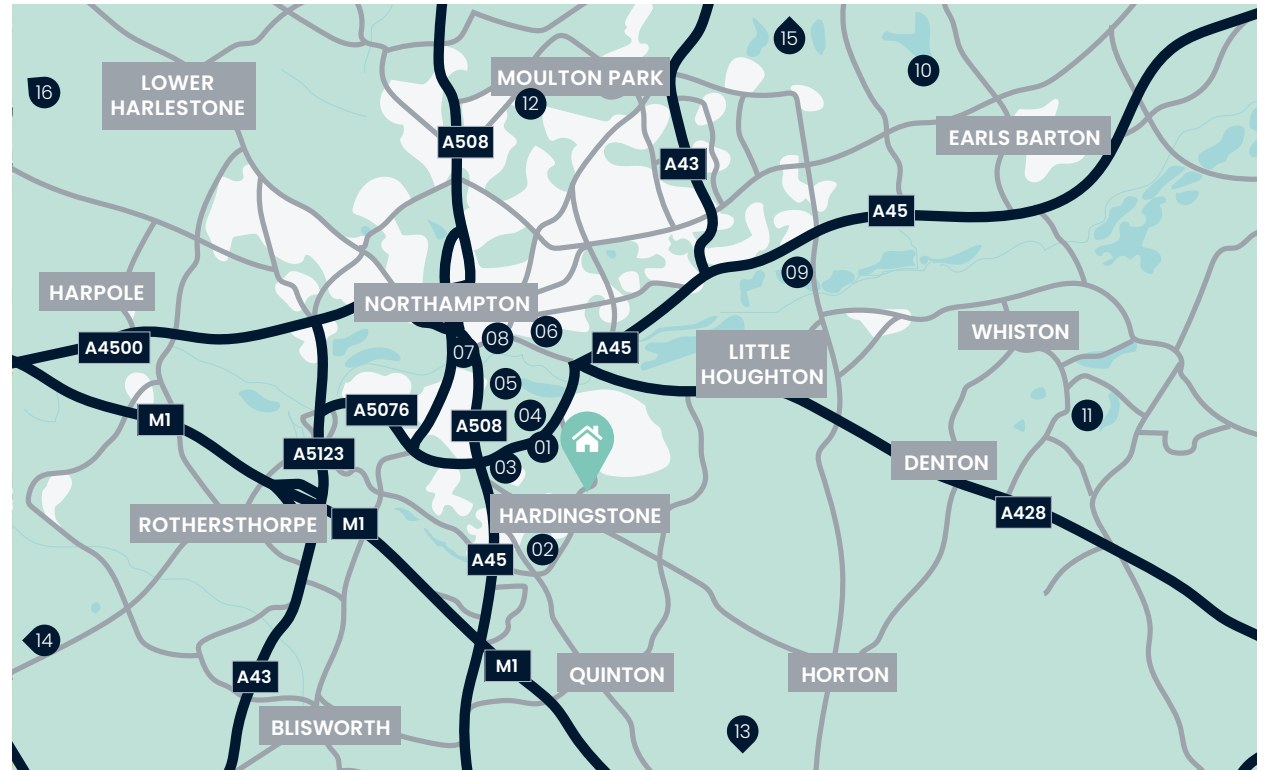
London Euston

1 hr 04 min

Birmingham

Destinations by car

Destinations by train
Northampton Station



Your nearest transport links



Northampton Station



M1



Luton Airport

Up to 2 Miles

- 01. Hardington Pocket Park
- 02. Wootton Community and Sports Centre
- 03. Waitrose Supermarket
- 04. Delapré Golf Centre

Up to 5 Miles

- 05. Delapré Abbey
- 06. Northampton General Hospital
- 07. Cultural Quarter
- 08. St Giles' Street

Up to 10 Miles

- 09. Billing Aquadrome
- 10. Sywell Country Park
- 11. Castle Ashby Gardens
- 12. University of Northampton

Up to 25 Miles

- 13. Milton Keynes
- 14. National Trust Canons Ashby
- 15. Kettering
- 16. Rugby

Map shown is not to scale. Times, distances and directions are approximate only and are taken from google.co.uk/maps and nationalrail.co.uk. June 2022.



The benefits of buying new

All our homes also come with a '2-year Tilia Homes Customer Care Warranty' and a further '8-year NHBC Warranty' for added peace of mind.



Energy-Efficient

New homes are built to the latest specifications and standards meaning a more energy-efficient home.



No Chain

You are not buying into a chain. This means a faster, easier buying process without the hassle.



Great Schemes

Benefit from schemes only available when buying a new build, such as our Part Exchange and Smooth Move schemes.



Personalise your home

You can make changes to your home by choosing from our extensive list of finishing touches subject to build stage.



Low Maintenance

With the latest regulations and specifications it's unlikely you'll need to worry about repairs for a while. New homes also include a 10-year NHBC warranty to cover structural defects.



It's Brand New

Be the first to live in the property. It's brand new – and all yours!

*Available only at specified stages of build.

Moving Schemes

Tilia Homes likes to make sure that you can move into your new dream home, whatever your situation. We can help you overcome almost any obstacle that you face as a new homebuyer.



Part Exchange

If you want to ensure a smooth and easy move to your new home by Tilia Homes, you may wish to consider our Part Exchange scheme.



Smooth Move

We'll do all we can to ensure that your existing home is sold quickly, at the best possible price – and we'll pay the estate agent's fees.



Customer Commitment

Our aim is to do our best to take care of everything.

From carefully choosing the ideal location for our new community to designing and building homes that fit perfectly into the natural environment.

We'll make sure you have all the information you need every step of the way, whether that's letting you know what's happening with your sale or introducing you to every detail of your new home – we know homebuilding doesn't stop once you've moved in.

We pride ourselves on being there for our customers throughout the buying and selling process – and beyond.

Helping build homes and communities we can all be proud of, for many years to come.



Tilia Homes in their efforts to improve designs reserve the right to alter site plans, floorplans, elevations and specifications without notice. All lifestyle and location imagery used within this brochure is indicative only. Maps shown are not to scale. Times, distances and directions are approximate only and are taken from [google.co.uk/maps](https://www.google.co.uk/maps) and [nationalrail.co.uk](https://www.nationalrail.co.uk). Information is correct at the time of going to print. Please see the development page on our website for further details. For terms and conditions on our schemes and incentives including Part Exchange or Smooth Move, go to tiliahomes.co.uk. Please speak to your Sales Executive for further details. April 2023.

LANDIMORE PARK

HARDINGSTONE

This beautiful collection of two, three and four bedroom homes in Hardingstone, on the outskirts of Northampton, offers the perfect base for modern family life.



2 Bedroom Homes

- The Dalton V1 & V2
- The Pemberton
- The Sutton

3 Bedroom Homes

- The Alderley V1
- The Bembridge & V1
- The Clandon
- The Coleridge V1
- The Derwent V1 & V2
- The Dunstable
- The Melford & V1
- The Morden V1 & V2

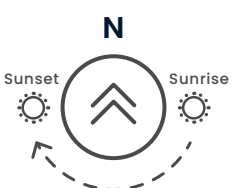
4 Bedroom Homes

- The Arlington V1 & V2
- The Ashleworth V1 & V2
- The Claydon V1
- The Grantham
- The Selsdon V1
- The Willington V1

5 Bedroom Homes

- The Barrington
- The Branscombe

- Affordable Homes
- Private Rental Homes
- BCP — Bin Collection Point
- BS — Bin Store
- CS — Cycle Store
- SS — Sub-Station
- V — Visitor Parking



The development layout does not show details of gradients of land, boundary treatments, local authority street lighting or landscaping. It is our intention to build in accordance with this layout. However, there may be occasions when the house designs, boundaries, landscaping and positions of roads and footpaths change as the development proceeds. The location of affordable homes is indicative and subject to change, properties coloured blue will remain affordable housing tenure and are not available for general sale. The remaining homes on the development are available for open market sale to purchasers, who could be private individuals or another type of purchaser (for example local authorities, housing associations or other commercial landlords), and therefore the mix of tenures on a development may change. Site plan is not to scale. Please speak to our Sales Executives for more details. June 2024.

The Buxton

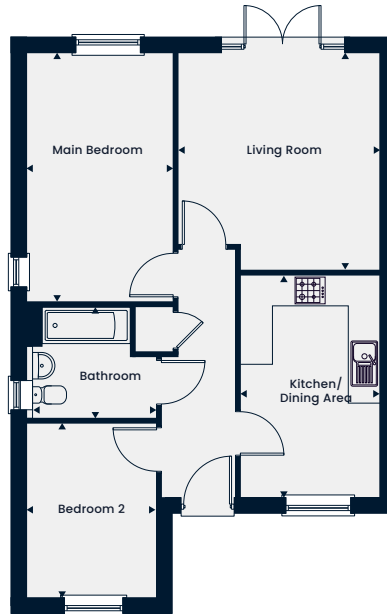
2 Bedroom Home



This computer generated image is for illustrative purposes only. Images may include optional upgrades at additional cost. Its purpose is to give a feel for the development, not an accurate description of each property. External materials, finishes, landscaping and the position of garages (where provided), may vary throughout the development. Properties may also be built handed (mirror image). Please ask for further details.



A lovely two bedroom bungalow featuring a living room with double doors to the garden and a separate kitchen/dining area. The main bedroom, second bedroom, bathroom and cupboard complete this home.



Ground Floor

Kitchen/Dining Area	4.26m x 2.66m 14'0" x 8'9"
Living Room	4.15m x 3.86m 13'8" x 12'8"
Main Bedroom	4.75m x 2.75m 15'7" x 9'0"
Bedroom 2	3.31m x 2.43m 10'11" x 8'0"
Bathroom	2.43m x 2.15m 8'0" x 7'1"

The Dalton V1

2 Bedroom Home



This computer generated image is for illustrative purposes only. Images may include optional upgrades at additional cost. Its purpose is to give a feel for the development, not an accurate description of each property. External materials, finishes, landscaping and the position of garages (where provided), may vary throughout the development. Properties may also be built handed (mirror image). Please ask for further details.



The Dalton V1

2 Bedroom Home

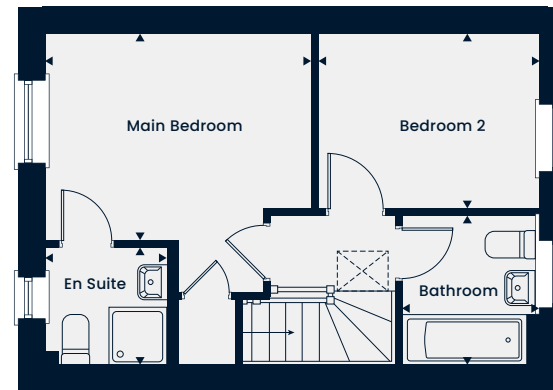
Total Area 692 sq. ft.

A charming two bedroom home with a kitchen/dining area and a spacious living area. Double doors lead to the rear garden. Upstairs, two good sized bedrooms are found and a family bathroom, the main bedroom benefits from an en suite.



Ground Floor

Kitchen/Dining Area [†]	3.83m x 2.46m 12'7" x 8'1"
Living Room	4.57m x 2.90m 15'0" x 9'6"



First Floor

Main Bedroom	3.67m x 2.86m 12'1" x 9'5"
En Suite	1.69m x 1.62m 5'7" x 5'4"
Bedroom 2	3.06m x 2.42m 10'0" x 7'11"
Bathroom	2.06m x 1.90m 6'9" x 6'3"

WC – Cloakroom – Rooflight

*Window to plot 148 only. [†]Extended bay window and Kitchen/Dining Area dims (4.52m x 2.05m – 14'10" x 8'2") to plots 118, 126, 136, 147 & 156 only. The floorplans depict a typical layout of this housetype. All dimensions are + or – 50mm and are not shown to scale. They are not intended to be used for carpet sizes, appliance sizes or items of furniture. These floorplans are a guide only and may be subject to change. Total area is approximate. For exact plot specification, details of external and internal finishes, dimensions and floorplan differences consult our Sales Executive. April 2024.



The Dalton V2

2 Bedroom Home



This computer generated image is for illustrative purposes only. Images may include optional upgrades at additional cost. Its purpose is to give a feel for the development, not an accurate description of each property. External materials, finishes, landscaping and the position of garages (where provided), may vary throughout the development. Properties may also be built handed (mirror image). Please ask for further details.



The Dalton V2

2 Bedroom Home

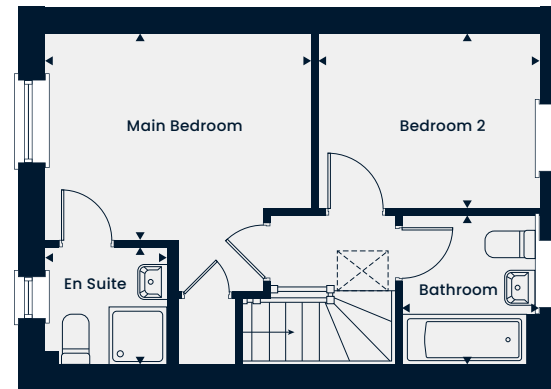
Total Area 692 sq. ft.

A charming two bedroom home with a kitchen/dining area and a spacious living area. Double doors lead to the rear garden. Upstairs, two good sized bedrooms are found and a family bathroom, the main bedroom benefits from an en suite.



Ground Floor

Kitchen/Dining Area	4.52m x 2.05m 14'10" x 8'2"
Living Room	4.57m x 2.90m 15'0" x 9'6"



First Floor

Main Bedroom	3.67m x 2.86m 12'1" x 9'5"
En Suite	1.69m x 1.62m 5'7" x 5'4"
Bedroom 2	3.06m x 2.42m 10'0" x 7'11"
Bathroom	2.06m x 1.90m 6'9" x 6'3"

WC – Cloakroom – Rooflight

*Window to plot 148 only. The floorplans depict a typical layout of this housetype. This floorplan is handed. All dimensions are + or – 50mm and are not shown to scale. They are not intended to be used for carpet sizes, appliance sizes or items of furniture. These floorplans are a guide only and may be subject to change. Total area is approximate. For exact plot specification, details of external and internal finishes, dimensions and floorplan differences consult our Sales Executive. April 2024.

The Pemberton

2 Bedroom Home



This computer generated image is for illustrative purposes only. Images may include optional upgrades at additional cost. Its purpose is to give a feel for the development, not an accurate description of each property. External materials, finishes, landscaping and the position of garages (where provided), may vary throughout the development. Properties may also be built handed (mirror image). Please ask for further details.

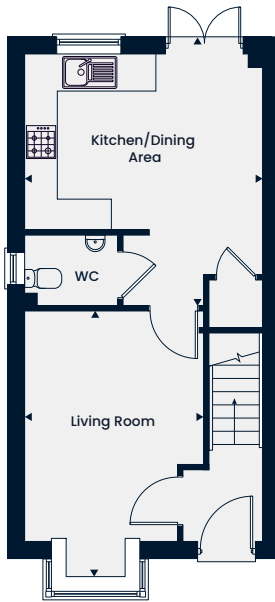


The Pemberton

2 Bedroom Home

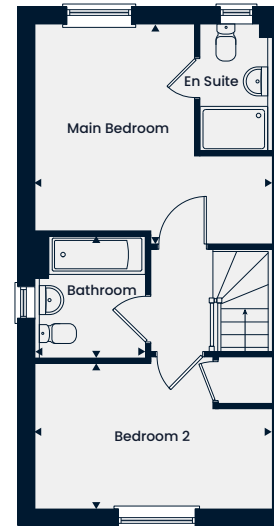
Total Area 777 sq. ft.

A delightful two bedroom home featuring a living room with a bay window allowing for plenty of natural light and a separate kitchen/dining area with double doors leading out to the garden. Upstairs you'll find the main bedroom boasting an en suite, a further bedroom, and a family bathroom.



Ground Floor

Kitchen/Dining Area	4.40m x 4.12m 14'5" x 13'6"
Living Room	4.01m x 3.11m 13'2" x 10'2"



First Floor

Main Bedroom	4.12m x 3.84m 13'6" x 12'7"
En Suite	2.21m x 1.25m 7'3" x 4'1"
Bedroom 2	4.12m x 2.56m 13'6" x 8'5"
Bathroom	2.15m x 1.92m 7'1" x 6'4"

WC – Cloakroom

The floorplans depict a typical layout of this housetype. All dimensions are + or - 50mm and are not shown to scale. They are not intended to be used for carpet sizes, appliance sizes or items of furniture. These floorplans are a guide only and may be subject to change. Total area is approximate. For exact plot specification, details of external and internal finishes, dimensions and floorplan differences consult our Sales Executive. July 2022.



The Sutton

2 Bedroom Home



This computer generated image is for illustrative purposes only. Images may include optional upgrades at additional cost. Its purpose is to give a feel for the development, not an accurate description of each property. External materials, finishes, landscaping and the position of garages (where provided), may vary throughout the development. Properties may also be built handed (mirror image). Please ask for further details.

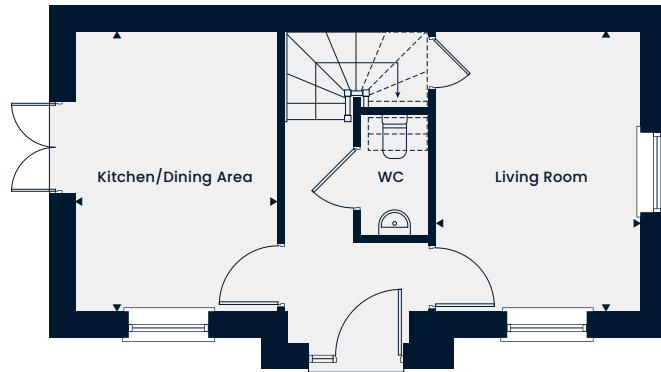


The Sutton

2 Bedroom Home

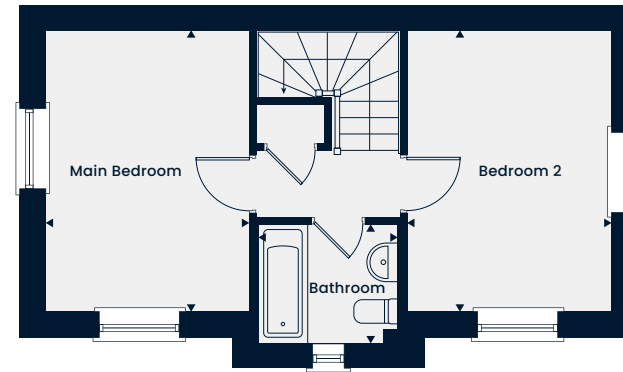
Total Area 728 sq. ft.

A delightful two bedroom double fronted home with a spacious living room on one side and a kitchen/dining area with double doors to the garden on the other. Upstairs, there are two bedrooms with dual aspect windows and a family bathroom.



Ground Floor

Kitchen/Dining Area	4.06m x 2.94m 13'4" x 9'8"
Living Room	4.06m x 2.94m 13'4" x 9'8"



First Floor

Main Bedroom	4.06m x 2.94m 13'4" x 9'8"
Bedroom 2	4.06m x 2.94m 13'4" x 9'8"

WC – Cloakroom

The floorplans depict a typical layout of this housetype. All dimensions are + or – 50mm and are not shown to scale. They are not intended to be used for carpet sizes, appliance sizes or items of furniture. These floorplans are a guide only and may be subject to change. Total area is approximate. For exact plot specification, details of external and internal finishes, dimensions and floorplan differences consult our Sales Executives. November 2023.



The Alderley V1

3 Bedroom Home



This computer generated image is for illustrative purposes only. Images may include optional upgrades at additional cost. Its purpose is to give a feel for the development, not an accurate description of each property. External materials, finishes, landscaping and the position of garages (where provided), may vary throughout the development. Properties may also be built handed (mirror image). Please ask for further details.

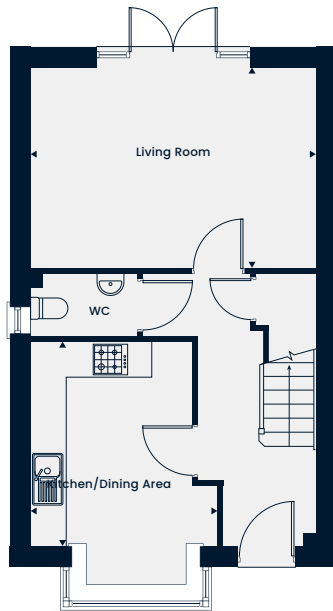


The Alderley V1

3 Bedroom Home

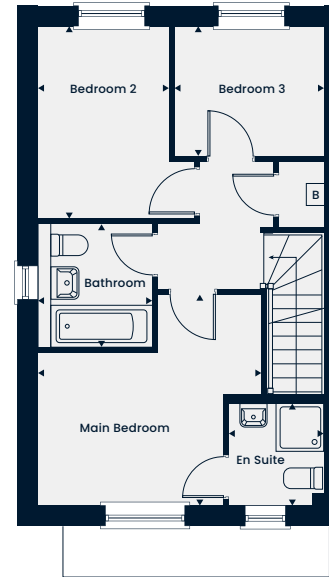
Total Area 858 sq. ft.

The Alderley V1 is a lovely three bedroom home. The ground floor features a living room and a spacious kitchen/dining area with a bay window. A cloakroom and handy storage cupboard complete the ground floor. Upstairs, there is the main bedroom featuring an en suite, two further bedrooms and a family bathroom.



Ground Floor

Kitchen/Dining Area	3.43m x 3.14m 11'3" x 10'4"
Living Room	4.79m x 3.41m 15'9" x 11'2"



First Floor

Main Bedroom	3.74m x 3.52m 12'3" x 11'7"
En Suite	1.67m x 1.60m 5'6" x 5'3"
Bedroom 2	3.26m x 2.63m 10'8" x 8'8"
Bedroom 3	2.52m x 2.21m 8'3" x 7'3"
Bathroom	2.07m x 1.89m 6'9" x 6'3"

B – Boiler WC – Cloakroom

The floorplans depict a typical layout of this housetype. All dimensions are + or – 50mm and are not shown to scale. They are not intended to be used for carpet sizes, appliance sizes or items of furniture. These floorplans are a guide only and may be subject to change. Total area is approximate. For exact plot specification, details of external and internal finishes, dimensions and floorplan differences consult our Sales Executive. July 2022.



The Bembridge V1

3 Bedroom Home



This computer generated image is for illustrative purposes only. Images may include optional upgrades at additional cost. Its purpose is to give a feel for the development, not an accurate description of each property. External materials, finishes, landscaping and the position of garages (where provided), may vary throughout the development. Properties may also be built handed (mirror image). Please ask for further details.



The Bembridge V1

3 Bedroom Home

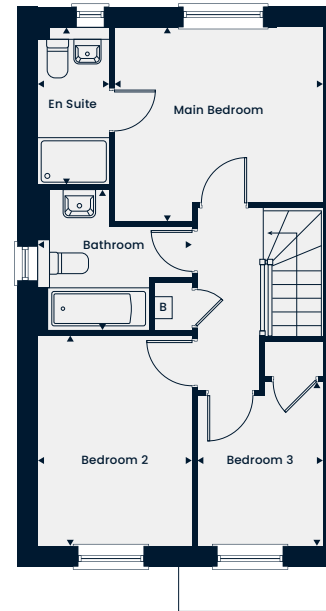
Total Area 915 sq. ft.

The Bembridge V1 is a delightful three bedroom home featuring a spacious living room, with double doors leading out to the garden, and a large open-plan kitchen/dining area. Upstairs there is the main bedroom with an en suite, two further good-sized bedrooms and a family bathroom.



Ground Floor

Kitchen/Dining Area	5.22m x 2.66m 17'2" x 8'9"
Living Room	4.79m x 3.39m 15'9" x 11'2"



First Floor

Main Bedroom	3.50m x 3.27m 11'6" x 10'9"
En Suite	2.64m x 1.20m 8'8" x 3'11"
Bedroom 2	3.54m x 2.58m 11'8" x 8'6"
Bedroom 3	2.76m x 2.12m 9'1" x 6'11"
Bathroom	2.58m x 2.34m 8'7" x 7'8"

B – Boiler WC – Cloakroom

The floorplans depict a typical layout of this housetype. All dimensions are + or – 50mm and are not shown to scale. They are not intended to be used for carpet sizes, appliance sizes or items of furniture. These floorplans are a guide only and may be subject to change. Total area is approximate. For exact plot specification, details of external and internal finishes, dimensions and floorplan differences consult our Sales Executive. July 2022.



The Derwent V1

3 Bedroom Home



This computer generated image is for illustrative purposes only. Images may include optional upgrades at additional cost. Its purpose is to give a feel for the development, not an accurate description of each property. External materials, finishes, landscaping and the position of garages (where provided), may vary throughout the development. Properties may also be built handed (mirror image). Please ask for further details.

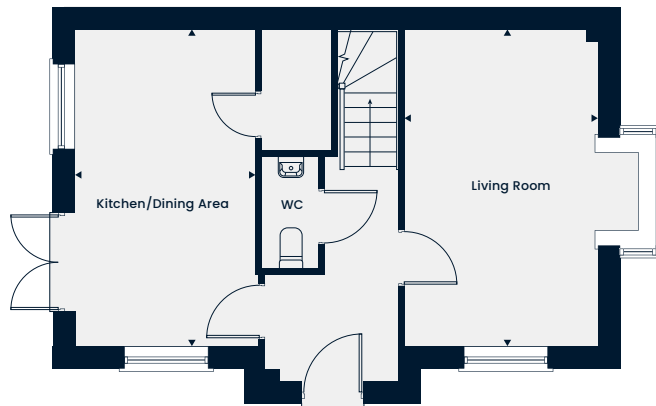


The Derwent VI

3 Bedroom Home

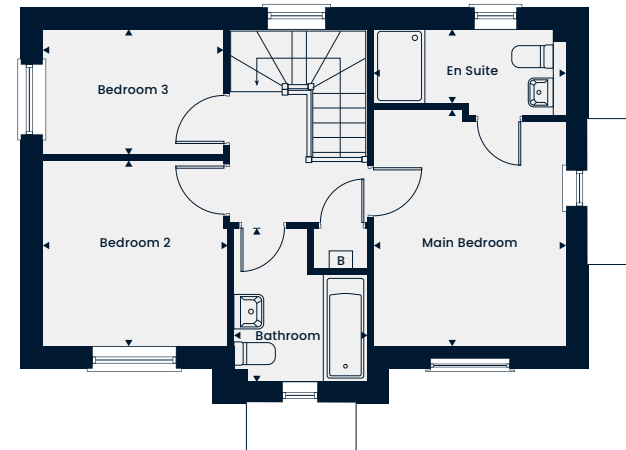
Total Area 946 sq. ft.

A delightful three bedroom home featuring a living room with a bay window allowing for plenty of natural light, and a separate kitchen/dining area with double doors leading out to the garden. Upstairs you'll find the main bedroom boasting an en suite, two further bedrooms and a family bathroom.



Ground Floor

Kitchen/Dining Area	5.02m x 2.86m 16'5" x 9'4"
Living Room	5.02m x 3.05m 16'5" x 10'3"



First Floor

Main Bedroom	3.73m x 3.05m 12'2" x 9'11"
En Suite	3.05m x 1.38m 9'11" x 4'6"
Bedroom 2	2.94m x 2.92m 9'6" x 9'5"
Bedroom 3	2.86m x 1.98m 9'4" x 6'6"
Bathroom	2.44m x 2.12m 7'11" x 6'11"

B – Boiler WC – Cloakroom

The floorplans depict a typical layout of this housetype. All dimensions are + or – 50mm and are not shown to scale. They are not intended to be used for carpet sizes, appliance sizes or items of furniture. These floorplans are a guide only and may be subject to change. Total area is approximate. For exact plot specification, details of external and internal finishes, dimensions and floorplan differences consult our Sales Executive. July 2022.



The Morden V1

3 Bedroom Home



This computer generated image is for illustrative purposes only. Images may include optional upgrades at additional cost. Its purpose is to give a feel for the development, not an accurate description of each property. External materials, finishes, landscaping and the position of garages (where provided), may vary throughout the development. Properties may also be built handed (mirror image). Please ask for further details.

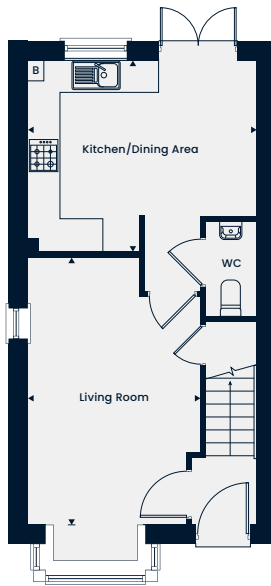


The Morden V1

3 Bedroom Home

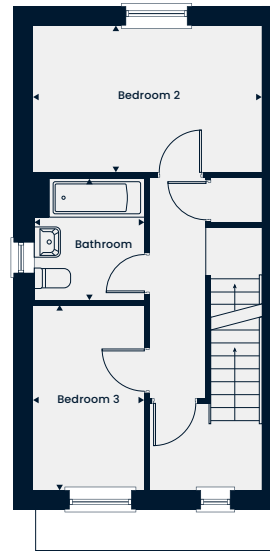
Total Area 1,092 sq. ft.

A modern three bedroom, three storey home with a spacious living room leading through to the kitchen/dining area on the ground floor. The first floor offers two good-sized bedrooms and a family bathroom. The top floor boasts an expansive main bedroom with an en suite.



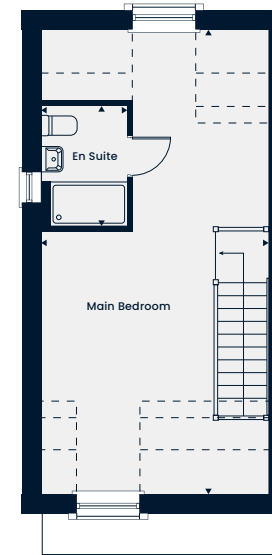
Ground Floor

Kitchen/Dining Area
4.12m x 3.46m | 13'6" x 11'4"
Living Room
4.83m x 3.11m | 15'10" x 10'2"



First Floor

Bedroom 2
4.12m x 2.66m | 13'6" x 8'9"
Bedroom 3
3.33m x 2.01m | 10'11" x 6'7"
Bathroom
2.22m x 2.01m | 7'3" x 6'7"



Second Floor

Main Bedroom
6.82m x 4.12m | 22'3" x 13'7"
En Suite
2.17m x 1.57m | 7'1" x 5'2"

B – Boiler - - - - Reduced Head Height WC – Cloakroom

The floorplans depict a typical layout of this housetype. All dimensions are + or – 50mm and are not shown to scale. They are not intended to be used for carpet sizes, appliance sizes or items of furniture. These floorplans are a guide only and may be subject to change. Total area is approximate. For exact plot specification, details of external and internal finishes, dimensions and floorplan differences consult our Sales Executive. July 2022.



The Clandon

3 Bedroom Home



This computer generated image is for illustrative purposes only. Images may include optional upgrades at additional cost. Its purpose is to give a feel for the development, not an accurate description of each property. External materials, finishes, landscaping and the position of garages (where provided), may vary throughout the development. Properties may also be built handed (mirror image). Please ask for further details.

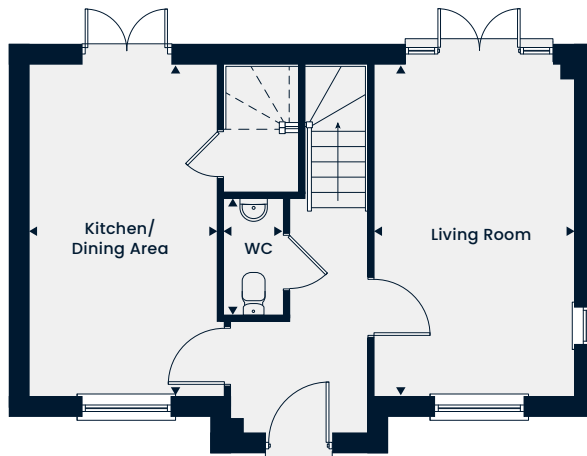


The Clandon

3 Bedroom Home

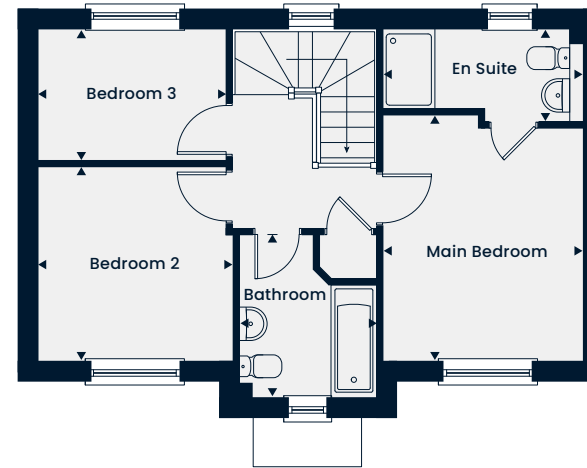
Total Area 937 sq. ft.

A modern three bedroom home with a spacious living room and a large open-plan kitchen/dining area, both rooms include double doors leading out to the garden. Upstairs, the main bedroom benefits from an en suite, two further bedrooms and a family bathroom.



Ground Floor

Kitchen/Dining Area	4.99m x 2.79m 16'4" x 9'2"
Living Room	4.99m x 3.02m 16'4" x 9'11"



First Floor

Main Bedroom	3.69m x 3.02m 12'1" x 9'11"
En Suite	3.02m x 1.36m 9'11" x 4'6"
Bedroom 2	2.91m x 2.91m 9'7" x 9'7"
Bedroom 3	2.80m x 1.95m 9'2" x 6'5"
Bathroom	2.43m x 2.05m 8'0" x 6'9"

WC – Cloakroom

The floorplans depict a typical layout of this housetype. All dimensions are + or - 50mm and are not shown to scale. They are not intended to be used for carpet sizes, appliance sizes or items of furniture. These floorplans are a guide only and may be subject to change. Total area is approximate. For exact plot specification, details of external and internal finishes, dimensions and floorplan differences consult our Sales Executive. September 2022.



The Coleridge V1

3 Bedroom Home



This computer generated image is for illustrative purposes only. Images may include optional upgrades at additional cost. Its purpose is to give a feel for the development, not an accurate description of each property. External materials, finishes, landscaping and the position of garages (where provided), may vary throughout the development. Properties may also be built handed (mirror image). Please ask for further details.

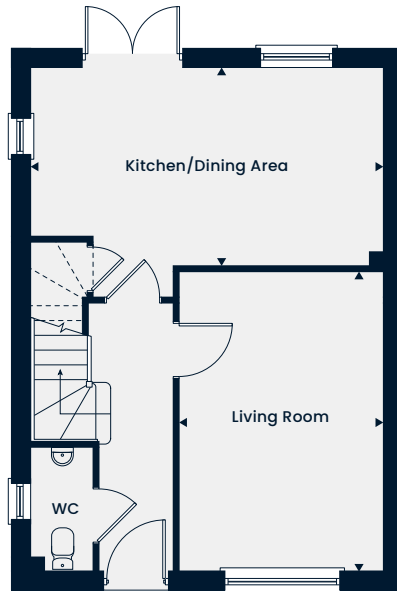


The Coleridge V1

3 Bedroom Home

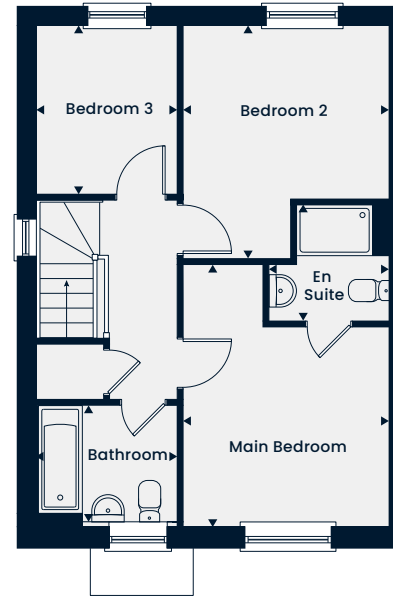
Total Area 938 sq. ft.

A spacious three bedroom home featuring a living room and an open-plan kitchen/dining area with double doors leading out to the garden. Upstairs, there is the main bedroom with an en suite, two further bedrooms and a family bathroom.



Ground Floor

Kitchen/Dining Area	5.47m x 3.06m 17'9" x 10'0"
Living Room	4.65m x 3.17m 15'2" x 10'4"



First Floor

Main Bedroom	4.10m x 3.19m 13'4" x 10'4"
En Suite	1.84m x 1.80m 6'0" x 5'9"
Bedroom 2	3.61m x 3.19m 11'8" x 10'4"
Bedroom 3	2.59m x 2.15m 8'4" x 7'0"
Bathroom	2.15m x 1.88m 7'0" x 6'1"

WC – Cloakroom

The floorplans depict a typical layout of this housetype. All dimensions are + or - 50mm and are not shown to scale. They are not intended to be used for carpet sizes, appliance sizes or items of furniture. These floorplans are a guide only and may be subject to change. Total area is approximate. For exact plot specification, details of external and internal finishes, dimensions and floorplan differences consult our Sales Executive. September 2022.



The Derwent V2

3 Bedroom Home



This computer generated image is for illustrative purposes only. Images may include optional upgrades at additional cost. Its purpose is to give a feel for the development, not an accurate description of each property. External materials, finishes, landscaping and the position of garages (where provided), may vary throughout the development. Properties may also be built handed (mirror image). Please ask for further details.

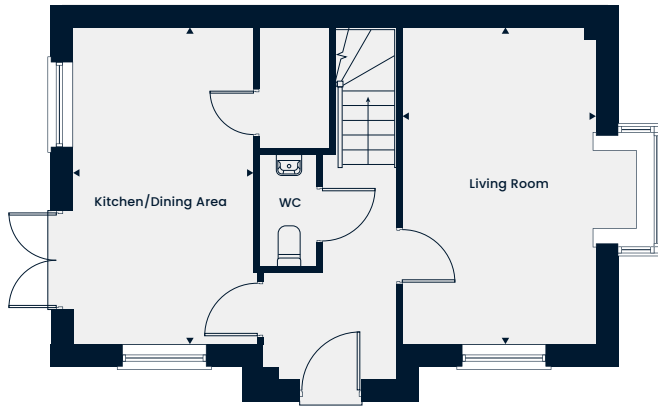


The Derwent V2

3 Bedroom Home

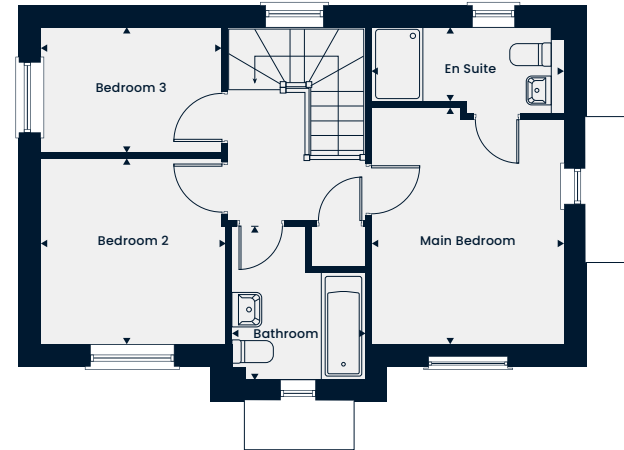
Total Area 947 sq. ft.

A delightful three bedroom home featuring a living room with a bay window allowing for plenty of natural light, and a separate kitchen/dining area with double doors leading out to the garden. Upstairs you'll find the main bedroom boasting an en suite, two further bedrooms and a family bathroom.



Ground Floor

Kitchen/Dining Area	5.02m x 2.86m 16'5" x 9'4"
Living Room	5.02m x 3.05m 16'5" x 10'3"



First Floor

Main Bedroom	3.73m x 3.05m 12'2" x 9'11"
En Suite	3.05m x 1.38m 9'11" x 4'6"
Bedroom 2	2.94m x 2.92m 9'6" x 9'5"
Bedroom 3	2.86m x 1.98m 9'4" x 6'6"
Bathroom	2.44m x 2.12m 7'11" x 6'11"

WC – Cloakroom

The floorplans depict a typical layout of this housetype. All dimensions are + or - 50mm and are not shown to scale. They are not intended to be used for carpet sizes, appliance sizes or items of furniture. These floorplans are a guide only and may be subject to change. Total area is approximate. For exact plot specification, details of external and internal finishes, dimensions and floorplan differences consult our Sales Executive. September 2022.



The Dunstable

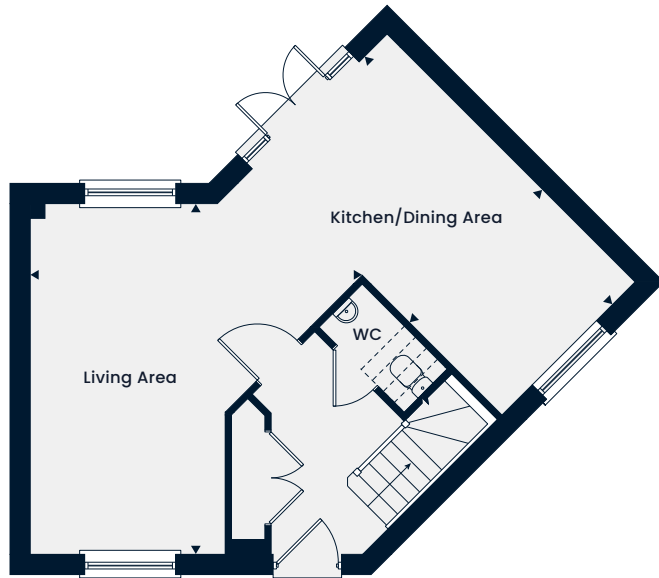
3 Bedroom Home



This computer generated image is for illustrative purposes only. Images may include optional upgrades at additional cost. Its purpose is to give a feel for the development, not an accurate description of each property. External materials, finishes, landscaping and the position of garages (where provided), may vary throughout the development. Properties may also be built handed (mirror image). Please ask for further details.



A delightful three bedroom home that benefits from a spacious living area and an open-plan kitchen/dining area with double doors leading out to the garden. On the first floor is the main bedroom with an en suite and two further bedrooms with easy access to the family bathroom.



Ground Floor

Kitchen/Dining Area	5.18m x 2.78m 17'0" x 9'1"
Living Area	5.18m x 4.93m 17'0" x 16'2"



First Floor

Main Bedroom	3.89m x 3.22m 12'9" x 10'6"
En Suite	2.41m x 1.46m 7'10" x 4'9"
Bedroom 2	2.98m x 2.90m 9'9" x 9'6"
Bedroom 3	4.17m x 2.11m 13'8" x 6'11"
Bathroom	2.62m x 1.85m 8'7" x 6'0"

WC – Cloakroom

The floorplans depict a typical layout of this housetype. All dimensions are + or - 50mm and are not shown to scale. They are not intended to be used for carpet sizes, appliance sizes or items of furniture. These floorplans are a guide only and may be subject to change. Total area is approximate. For exact plot specification, details of external and internal finishes, dimensions and floorplan differences consult our Sales Executive. November 2021.

The Melford V1

3 Bedroom Home



This computer generated image is for illustrative purposes only. Images may include optional upgrades at additional cost. Its purpose is to give a feel for the development, not an accurate description of each property. External materials, finishes, landscaping and the position of garages (where provided), may vary throughout the development. Properties may also be built handed (mirror image). Please ask for further details.

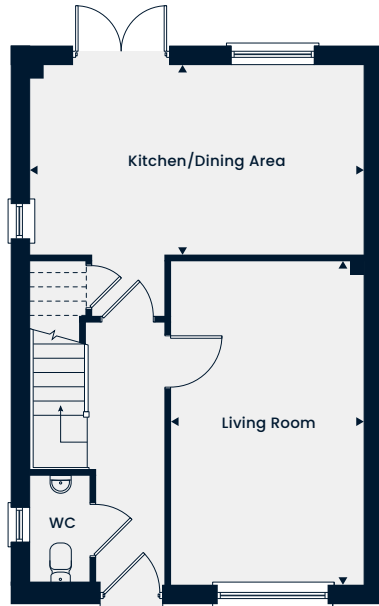


The Melford V1

3 Bedroom Home

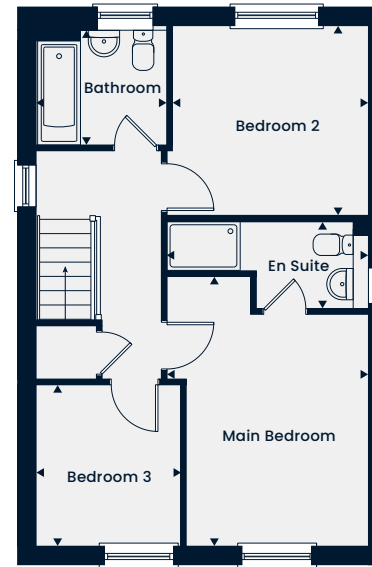
Total Area 984 sq. ft.

A well-proportioned three bedroom home featuring a spacious kitchen/dining area with double doors leading out to the garden. The ground floor is complete with a generous-sized living room. Upstairs, is the main bedroom featuring an en suite, two further bedrooms and a family bathroom.



Ground Floor

Kitchen/Dining Area	5.34m x 3.03m 17'5" x 9'9"
Living Room	5.22m x 3.08m 17'1" x 10'1"



First Floor

Main Bedroom	4.32m x 3.22m 14'1" x 10'5"
En Suite	3.22m x 1.38m 10'5" x 4'4"
Bedroom 2	3.13m x 3.03m 10'2" x 9'9"
Bedroom 3	2.56m x 2.28m 8'3" x 7'4"
Bathroom	2.08m x 1.87m 6'4" x 6'1"

WC – Cloakroom

The floorplans depict a typical layout of this housetype. All dimensions are + or - 50mm and are not shown to scale. They are not intended to be used for carpet sizes, appliance sizes or items of furniture. These floorplans are a guide only and may be subject to change. Total area is approximate. For exact plot specification, details of external and internal finishes, dimensions and floorplan differences consult our Sales Executive. September 2022.



The Morden V2

3 Bedroom Home



This computer generated image is for illustrative purposes only. Images may include optional upgrades at additional cost. Its purpose is to give a feel for the development, not an accurate description of each property. External materials, finishes, landscaping and the position of garages (where provided), may vary throughout the development. Properties may also be built handed (mirror image). Please ask for further details.

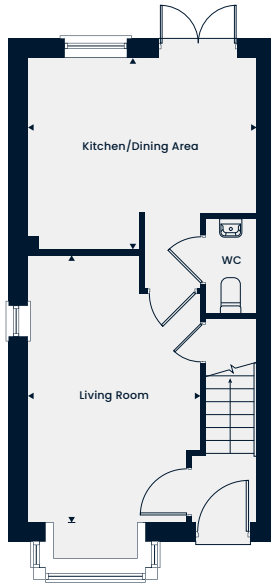


The Morden V2

3 Bedroom Home

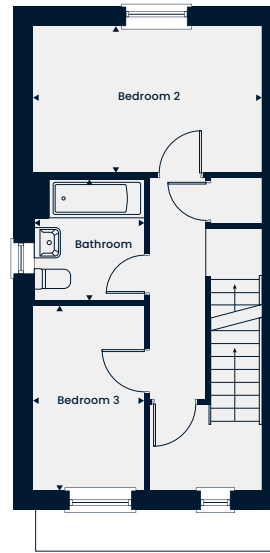
Total Area 1,093 sq. ft.

A modern three bedroom, three-storey home with a spacious living room leading through to the kitchen/dining area on the ground floor. The first floor offers two good-sized bedrooms and a family bathroom. The top floor boasts an expansive main bedroom with an en suite.



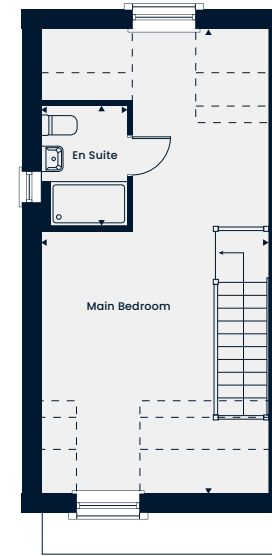
Ground Floor

Kitchen/Dining Area
4.12m x 3.46m | 13'6" x 11'4"
Living Room
4.83m x 3.11m | 15'10" x 10'2"



First Floor

Bedroom 2
4.12m x 2.66m | 13'6" x 8'9"
Bedroom 3
3.33m x 2.01m | 10'11" x 6'7"
Bathroom
2.22m x 2.01m | 7'3" x 6'7"



Second Floor

Main Bedroom
6.82m x 4.12m | 22'3" x 13'7"
En Suite
2.17m x 1.57m | 7'1" x 5'2"

--- Reduced Head Height WC – Cloakroom

The floorplans depict a typical layout of this housetype. All dimensions are + or - 50mm and are not shown to scale. They are not intended to be used for carpet sizes, appliance sizes or items of furniture. These floorplans are a guide only and may be subject to change. Total area is approximate. For exact plot specification, details of external and internal finishes, dimensions and floorplan differences consult our Sales Executive. September 2022.



The Arlington V1

4 Bedroom Home



This computer generated image is for illustrative purposes only. Images may include optional upgrades at additional cost. Its purpose is to give a feel for the development, not an accurate description of each property. External materials, finishes, landscaping and the position of garages (where provided), may vary throughout the development. Properties may also be built handed (mirror image). Please ask for further details.

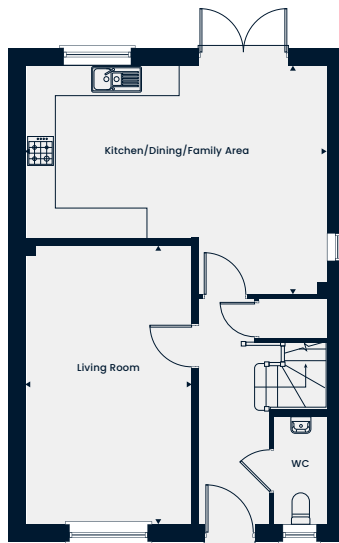


The Arlington VI

4 Bedroom Home

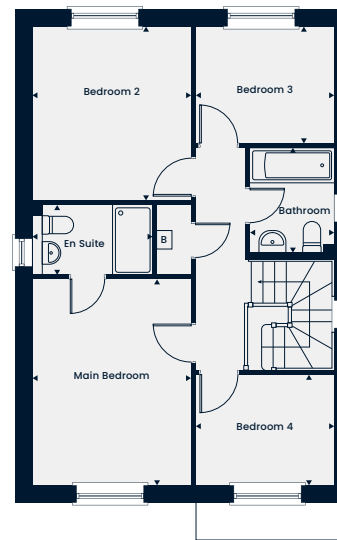
Total Area 1,210 sq. ft.

A charming four bedroom home featuring a spacious kitchen/dining/family area and a separate living room on the ground floor. The first floor comprises the main bedroom with an en suite, three further good-sized bedrooms and a family bathroom.



Ground Floor

Kitchen/Dining/Family Area	6.03m x 4.58m 19'9" x 15'3"
Living Room	5.58m x 3.32m 18'3" x 10'1"



First Floor

Main Bedroom	4.11m x 3.18m 13'6" x 10'5"
En Suite	2.41m x 1.39m 7'10" x 4'6"
Bedroom 2	3.48m x 3.18m 11'5" x 10'5"
Bedroom 3	2.76m x 2.33m 9'0" x 7'7"
Bedroom 4	2.76m x 2.21m 9'1" x 7'3"
Bathroom	2.09m x 1.67m 6'10" x 5'5"

B – Boiler WC – Cloakroom

The floorplans depict a typical layout of this housetype. All dimensions are + or – 50mm and are not shown to scale. They are not intended to be used for carpet sizes, appliance sizes or items of furniture. These floorplans are a guide only and may be subject to change. Total area is approximate. For exact plot specification, details of external and internal finishes, dimensions and floorplan differences consult our Sales Executive. July 2022.



The Ashleworth V1

4 Bedroom Home



This computer generated image is for illustrative purposes only. Images may include optional upgrades at additional cost. Its purpose is to give a feel for the development, not an accurate description of each property. External materials, finishes, landscaping and the position of garages (where provided), may vary throughout the development. Properties may also be built handed (mirror image). Please ask for further details.

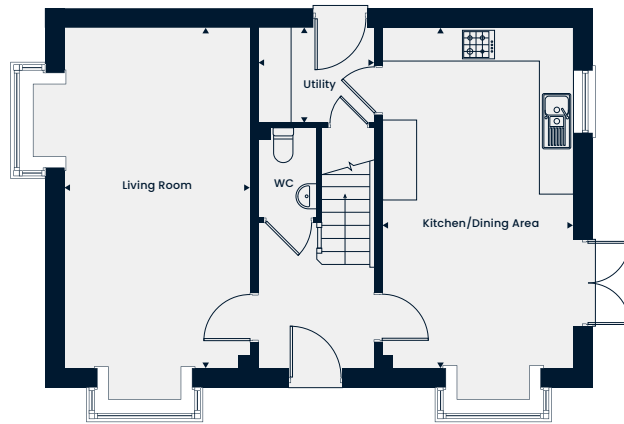


The Ashleworth V1

4 Bedroom Home

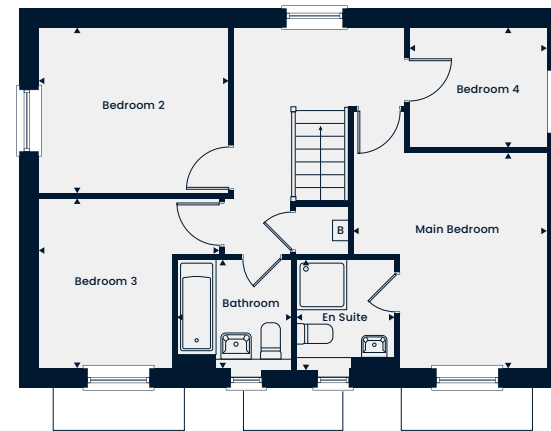
Total Area 1,249 sq. ft.

A delightful four bedroom home featuring bay windows allowing for plenty of natural light throughout the ground floor. A spacious kitchen/dining area, a separate living room and a utility complete downstairs. On the first floor the main bedroom boasting an en suite, three further bedrooms and a family bathroom can be found.



Ground Floor

Kitchen/Dining Area	6.15m x 3.45m 20'2" x 11'4"
Living Room	6.15m x 3.35m 20'2" x 11'0"
Utility	2.09m x 1.71m 6'10" x 5'8"



First Floor

Main Bedroom	3.90m x 3.51m 12'9" x 11'6"
En Suite	1.96m x 1.79m 6'5" x 5'11"
Bedroom 2	3.43m x 2.98m 11'3" x 9'10"
Bedroom 3	3.43m x 3.07m 11'3" x 10'1"
Bedroom 4	2.48m x 2.16m 8'2" x 7'1"
Bathroom	2.06m x 1.96m 6'9" x 6'5"

B – Boiler WC – Cloakroom

The floorplans depict a typical layout of this housetype. All dimensions are + or – 50mm and are not shown to scale. They are not intended to be used for carpet sizes, appliance sizes or items of furniture. These floorplans are a guide only and may be subject to change. Total area is approximate. For exact plot specification, details of external and internal finishes, dimensions and floorplan differences consult our Sales Executive. July 2022.



The Arlington V2

4 Bedroom Home



This computer generated image is for illustrative purposes only. Images may include optional upgrades at additional cost. Its purpose is to give a feel for the development, not an accurate description of each property. External materials, finishes, landscaping and the position of garages (where provided), may vary throughout the development. Properties may also be built handed (mirror image). Please ask for further details.



The Arlington V2

4 Bedroom Home

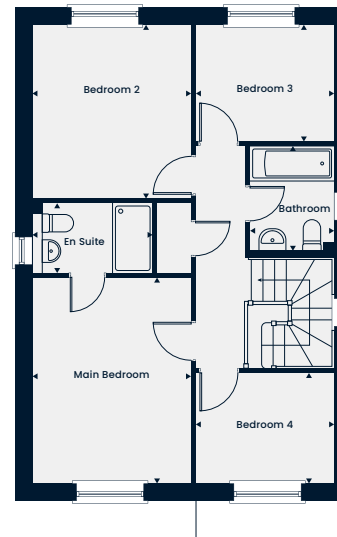
Total Area 1,210 sq. ft.

A charming four bedroom home featuring a spacious kitchen/dining/family area and a separate living room on the ground floor. The first floor comprises the main bedroom with an en suite, three further good-sized bedrooms and a family bathroom.



Ground Floor

Kitchen/Dining/Family Area	6.03m x 4.58m 19'9" x 15'3"
Living Room	5.58m x 3.32m 18'3" x 10'1"



First Floor

Main Bedroom	4.11m x 3.18m 13'6" x 10'5"
En Suite	2.41m x 1.39m 7'10" x 4'6"
Bedroom 2	3.48m x 3.18m 11'5" x 10'5"
Bedroom 3	2.76m x 2.33m 9'0" x 7'7"
Bedroom 4	2.76m x 2.21m 9'1" x 7'3"
Bathroom	2.09m x 1.67m 6'10" x 5'5"

WC – Cloakroom

The floorplans depict a typical layout of this housetype. All dimensions are + or - 50mm and are not shown to scale. They are not intended to be used for carpet sizes, appliance sizes or items of furniture. These floorplans are a guide only and may be subject to change. Total area is approximate. For exact plot specification, details of external and internal finishes, dimensions and floorplan differences consult our Sales Executive. September 2022.



The Ashleworth V2

4 Bedroom Home



This computer generated image is for illustrative purposes only. Images may include optional upgrades at additional cost. Its purpose is to give a feel for the development, not an accurate description of each property. External materials, finishes, landscaping and the position of garages (where provided), may vary throughout the development. Properties may also be built handed (mirror image). Please ask for further details.

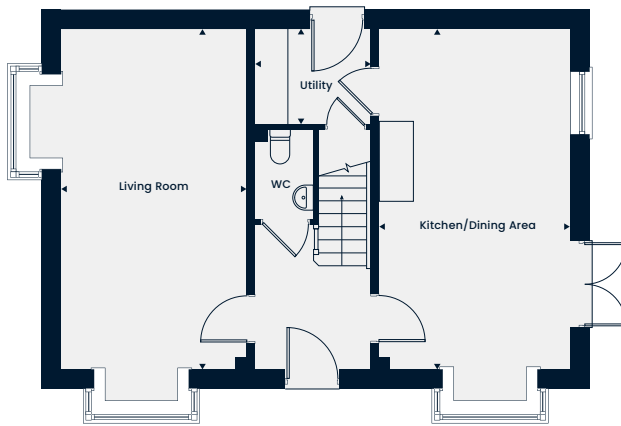


The Ashleworth V2

4 Bedroom Home

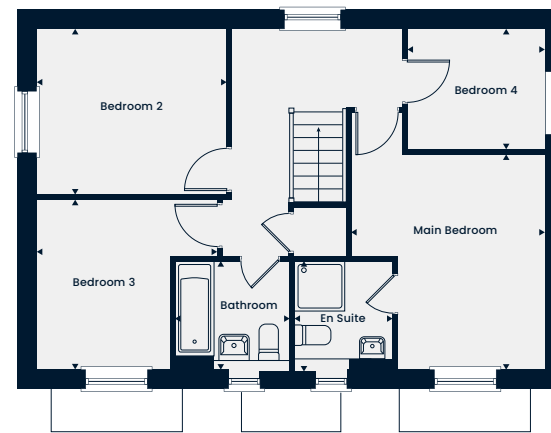
Total Area 1,267 sq. ft.

A delightful four bedroom home featuring bay windows allowing for plenty of natural light throughout the ground floor. A spacious kitchen/dining area, a separate living room and a utility complete downstairs. On the first floor the main bedroom boasting an en suite, three further bedrooms and a family bathroom can be found.



Ground Floor

Kitchen/Dining Area	6.15m x 3.45m		20'2" x 11'4"
Living Room	6.15m x 3.35m		20'2" x 11'0"
Utility	2.09m x 1.71m		6'10" x 5'8"



First Floor

Main Bedroom	3.90m x 3.51m		12'9" x 11'6"
En Suite	1.96m x 1.79m		6'5" x 5'11"
Bedroom 2	3.43m x 2.98m		11'3" x 9'10"
Bedroom 3	3.43m x 3.07m		11'3" x 10'1"
Bedroom 4	2.48m x 2.16m		8'2" x 7'1"
Bathroom	2.06m x 1.96m		6'9" x 6'5"

WC – Cloakroom

The floorplans depict a typical layout of this housetype. All dimensions are + or - 50mm and are not shown to scale. They are not intended to be used for carpet sizes, appliance sizes or items of furniture. These floorplans are a guide only and may be subject to change. Total area is approximate. For exact plot specification, details of external and internal finishes, dimensions and floorplan differences consult our Sales Executive. September 2022.



The Claydon V1

4 Bedroom Home



This computer generated image is for illustrative purposes only. Images may include optional upgrades at additional cost. Its purpose is to give a feel for the development, not an accurate description of each property. External materials, finishes, landscaping and the position of garages (where provided), may vary throughout the development. Properties may also be built handed (mirror image). Please ask for further details.



The Claydon VI

4 Bedroom Home

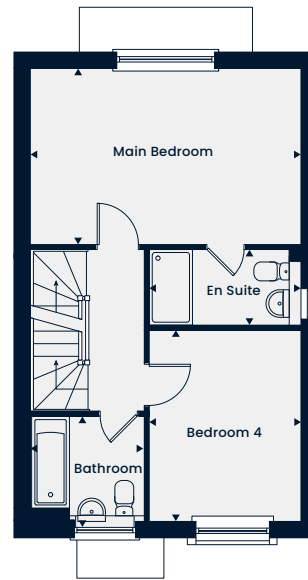
Total Area 1,370 sq. ft.

A modern four bedroom three-storey home. The ground floor comprises a kitchen/dining area and a separate living room with double doors leading into the garden. The first floor offers the main bedroom with an en suite alongside bedroom 4 and a family bathroom. Bedrooms 2 and 3 are found on the top floor, complete with a Jack and Jill bathroom.



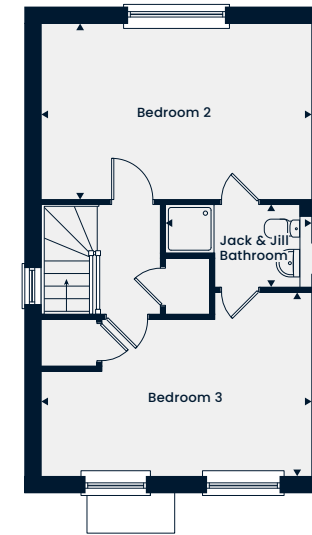
Ground Floor

Kitchen/Dining Area
4.97m x 2.64m | 16'3" x 8'6"
Living Room
4.90m x 3.19m | 16'0" x 10'4"



First Floor

Main Bedroom
4.90m x 3.19m | 16'0" x 10'4"
En Suite
2.74m x 1.38m | 8'9" x 4'5"
Bedroom 4
3.47m x 2.74m | 11'3" x 8'9"
Bathroom
2.04m x 1.88m | 6'6" x 6'1"



Second Floor

Bedroom 2
4.90m x 3.19m | 16'0" x 10'4"
Bedroom 3
4.90m x 3.34m | 16'0" x 10'9"
Jack & Jill Bathroom
2.64m x 1.50m | 8'6" x 4'9"

WC – Cloakroom

The floorplans depict a typical layout of this housetype. All dimensions are + or - 50mm and are not shown to scale. They are not intended to be used for carpet sizes, appliance sizes or items of furniture. These floorplans are a guide only and may be subject to change. Total area is approximate. For exact plot specification, details of external and internal finishes, dimensions and floorplan differences consult our Sales Executive. September 2022.

The Grantham

4 Bedroom Home



This computer generated image is for illustrative purposes only. Images may include optional upgrades at additional cost. Its purpose is to give a feel for the development, not an accurate description of each property. External materials, finishes, landscaping and the position of garages (where provided), may vary throughout the development. Properties may also be built handed (mirror image). Please ask for further details.

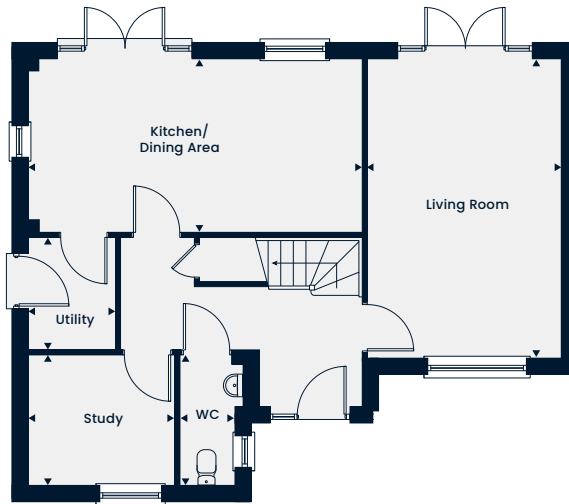


The Grantham

4 Bedroom Home

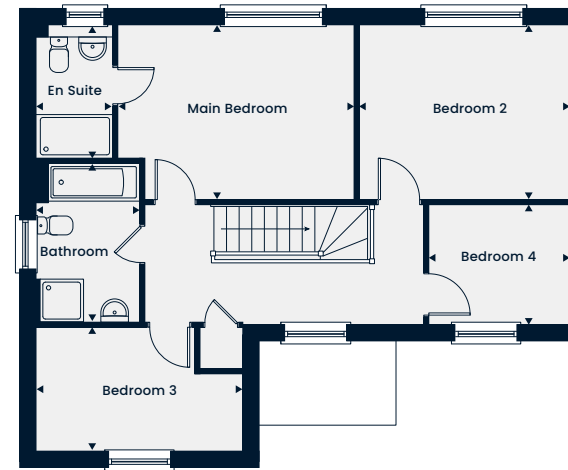
Total Area 1,394 sq. ft.

A spacious four bedroom home which benefits from a study and utility. Downstairs is complete with a living room and open-plan kitchen/dining area, both complemented with double doors leading out to the garden. Upstairs, there is the main bedroom, three further bedrooms and a family bathroom. The main bedroom benefits from an en suite.



Ground Floor

Kitchen/Dining Area	6.14m x 3.14m 20'1" x 10'3"
Living Room	5.47m x 3.56m 17'6" x 11'6"
Study	2.69m x 2.37m 8'8" x 7'7"



First Floor

Main Bedroom	4.34m x 3.19m 14'2" x 10'4"
Bedroom 2	3.89m x 3.19m 12'7" x 10'4"
Bedroom 3	3.78m x 2.25m 12'4" x 7'3"
Bedroom 4	2.59m x 2.16m 8'4" x 7'0"
En Suite	2.42m x 1.38m 7'9" x 4'5"
Bathroom	2.92m x 1.88m 9'5" x 6'1"

WC – Cloakroom

The floorplans depict a typical layout of this housetype. All dimensions are + or - 50mm and are not shown to scale. They are not intended to be used for carpet sizes, appliance sizes or items of furniture. These floorplans are a guide only and may be subject to change. Total area is approximate. For exact plot specification, details of external and internal finishes, dimensions and floorplan differences consult our Sales Executive. September 2022.



The Selsdon V1

4 Bedroom Home



This computer generated image is for illustrative purposes only. Images may include optional upgrades at additional cost. Its purpose is to give a feel for the development, not an accurate description of each property. External materials, finishes, landscaping and the position of garages (where provided), may vary throughout the development. Properties may also be built handed (mirror image). Please ask for further details.

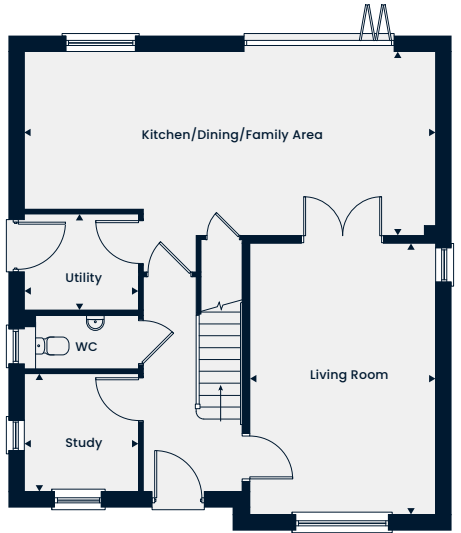


The Selsdon V1

4 Bedroom Home

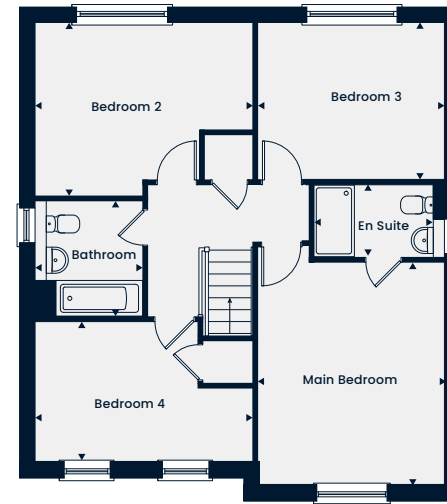
Total Area 1,509 sq. ft.

A spacious four bedroom home which benefits from a study, utility, living room and a separate open-plan kitchen/dining/family area, with a bi-fold door leading out to the garden. Upstairs, there is the main bedroom, three further bedrooms and a family bathroom. The main bedroom benefits from an en suite.



Ground Floor

Kitchen/Dining/Family Area	7.94m x 3.54m 26'0" x 11'6"
Living Room	5.25m x 3.55m 17'2" x 11'6"
Study	2.24m x 2.19m 7'3" x 7'1"
Utility	2.19m x 1.82m 7'1" x 5'9"



First Floor

Main Bedroom	4.31m x 3.59m 14'1" x 11'7"
En Suite	2.51m x 1.39m 8'2" x 4'5"
Bedroom 2	4.22m x 3.33m 13'8" x 10'9"
Bedroom 3	3.60m x 3.02m 11'8" x 9'9"
Bedroom 4	4.23m x 2.76m 13'8" x 9'0"
Bathroom	2.24m x 2.04m 7'3" x 6'6"

WC – Cloakroom

The floorplans depict a typical layout of this housetype. All dimensions are + or - 50mm and are not shown to scale. They are not intended to be used for carpet sizes, appliance sizes or items of furniture. These floorplans are a guide only and may be subject to change. Total area is approximate. For exact plot specification, details of external and internal finishes, dimensions and floorplan differences consult our Sales Executive. September 2022.



The Willington V1

4 Bedroom Home



This computer generated image is for illustrative purposes only. Images may include optional upgrades at additional cost. Its purpose is to give a feel for the development, not an accurate description of each property. External materials, finishes, landscaping and the position of garages (where provided), may vary throughout the development. Properties may also be built handed (mirror image). Please ask for further details.

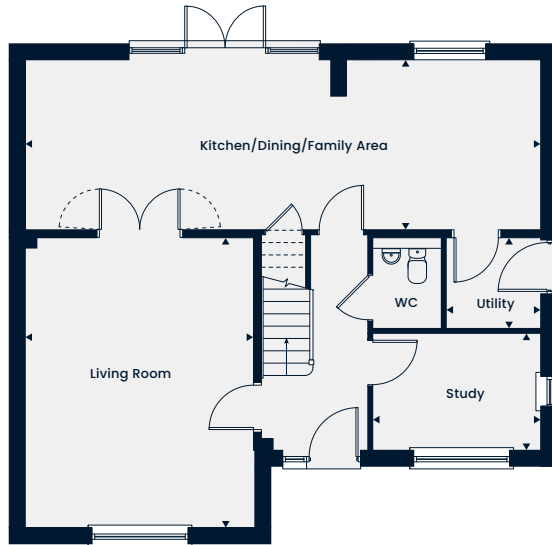


The Wellington V1

4 Bedroom Home

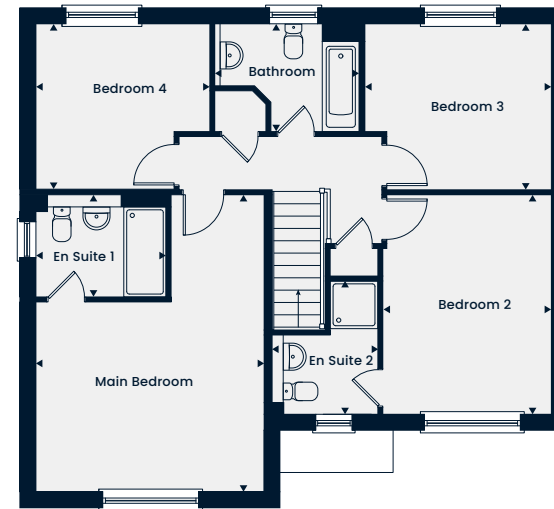
Total Area 1,662 sq. ft.

A lovely four bedroom home featuring a living room and an open-plan kitchen/dining/family area with double doors leading out to the garden. The ground floor is complete with a separate utility room, cloakroom, storage cupboard and spacious study. Upstairs, both the main bedroom and bedroom 2 benefit from an en suite, while two further bedrooms and a family bathroom complete the first floor.



Ground Floor

Kitchen/Dining/Family Area	9.63m x 3.15m 31'5" x 10'3"
Living Room	5.42m x 4.23m 17'7" x 10'3"
Study	3.10m x 2.14m 10'1" x 7'0"
Utility	1.72m x 1.70m 5'6" x 5'5"



First Floor

Main Bedroom	5.54m x 4.23m 18'1" x 13'8"
En Suite 1	2.39m x 1.90m 7'8" x 6'2"
Bedroom 2	4.08m x 3.12m 13'3" x 10'2"
En Suite 2	2.45m x 2.00m 8'0" x 6'5"
Bedroom 3	3.47m x 3.07m 11'3" x 10'0"
Bedroom 4	3.22m x 3.07m 10'5" x 10'0"
Bathroom	2.70m x 1.97m 8'8" x 6'4"

WC – Cloakroom

The floorplans depict a typical layout of this housetype. All dimensions are + or - 50mm and are not shown to scale. They are not intended to be used for carpet sizes, appliance sizes or items of furniture. These floorplans are a guide only and may be subject to change. Total area is approximate. For exact plot specification, details of external and internal finishes, dimensions and floorplan differences consult our Sales Executive. September 2022.



The Barrington

5 Bedroom Home



This computer generated image is for illustrative purposes only. Images may include optional upgrades at additional cost. Its purpose is to give a feel for the development, not an accurate description of each property. External materials, finishes, landscaping and the position of garages (where provided), may vary throughout the development. Properties may also be built handed (mirror image). Please ask for further details.

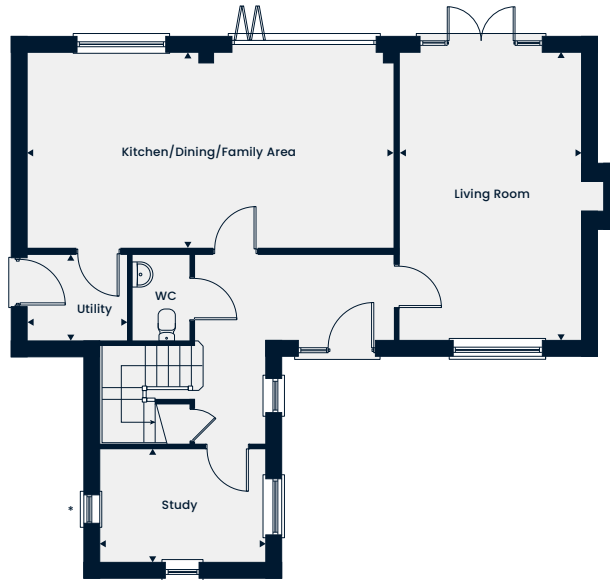


The Barrington

5 Bedroom Home

Total Area 1,749 sq. ft.

A spacious five bedroom home with an open-plan kitchen/dining/family area and a living room with double doors leading out to the garden. The living room has access to the hall leading to the study and the ground floor is complete with a utility. On the first floor, the main bedroom and second bedroom boast an en suite, three further bedrooms and a family bathroom can be found.



Ground Floor

Kitchen/Dining/Family Area	7.40m x 3.94m 24'3" x 12'11"
Living Room	5.80m x 3.64m 19'0" x 11'11"
Utility	1.99m x 1.70m 6'6" x 5'7"
Study	3.33m x 2.27m 10'11" x 7'5"



First Floor

Main Bedroom	5.80m x 3.34m 19'0" x 10'11"
En Suite 1	2.04m x 1.68m 6'8" x 5'6"
Bedroom 2	3.39m x 3.09m 11'1" x 10'2"
En Suite 2	2.04m x 1.58m 6'8" x 5'2"
Bedroom 3	3.59m x 2.60m 11'9" x 8'6"
Bedroom 4	3.33m x 2.27m 10'11" x 7'5"
Bedroom 5	2.84m x 2.60m 9'4" x 8'6"
Bathroom	2.24m x 2.04m 7'4" x 6'8"

WC – Cloakroom

The floorplans depict a typical layout of this housetype. All dimensions are + or - 50mm and are not shown to scale. They are not intended to be used for carpet sizes, appliance sizes or items of furniture. These floorplans are a guide only and may be subject to change. Total area is approximate. For exact plot specification, details of external and internal finishes, dimensions and floorplan differences consult our Sales Executive. September 2022.

The Branscombe

5 Bedroom Home



This computer generated image is for illustrative purposes only. Images may include optional upgrades at additional cost. Its purpose is to give a feel for the development, not an accurate description of each property. External materials, finishes, landscaping and the position of garages (where provided), may vary throughout the development. Properties may also be built handed (mirror image). Please ask for further details.

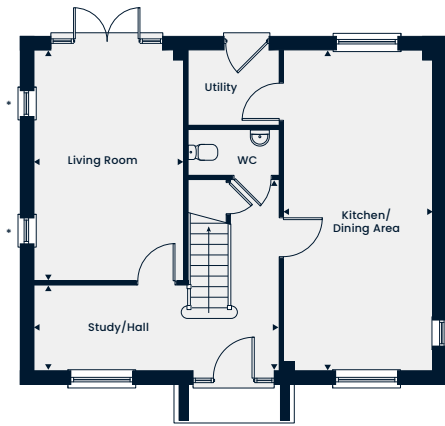


The Branscombe

5 Bedroom Home

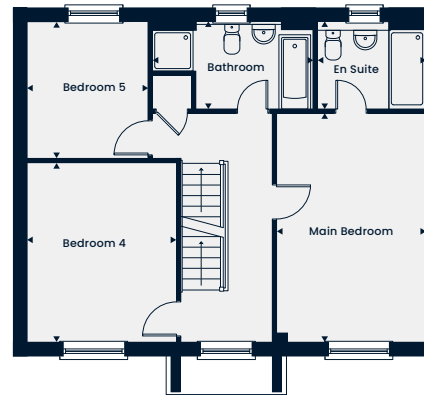
Total Area 1,801 sq. ft.

A spacious five bedroom, three-storey home with an open-plan kitchen/dining area and a living room with double doors leading out to the garden. The living room has access to the study/hall and the ground floor is complete with a utility. On the first floor, the main bedroom boasts an en suite, two further bedrooms and a family bathroom. On the top floor, there are two good-sized bedrooms, with the second bedroom featuring an en suite.



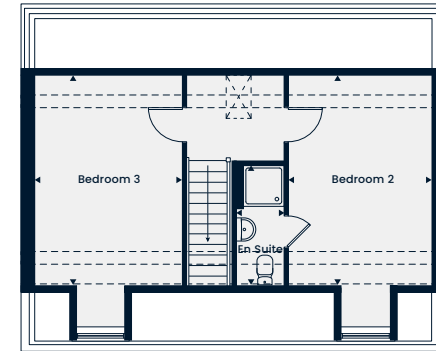
Ground Floor

Kitchen/Dining Area
7.04m X 3.24m | 23'1" x 10'8"
Living Room
5.04m X 3.24m | 16'6" x 10'8"
Study/Hall
5.33m x 4.20m x 1.88m | 17'6" x 13'9" x 6'2"



First Floor

Main Bedroom
5.04m x 3.24m | 16'6" x 10'8"
Bedroom 4
3.94m x 3.24m | 12'11" x 10'8"
Bedroom 5
2.98m x 2.62m | 9'9" x 8'7"
En Suite
2.34m x 1.88m | 7'8" x 6'2"
Bathroom
3.53m x 1.88m | 11'5" x 6'2"



Second Floor

Bedroom 2
4.69m x 3.13m | 15'5" x 10'3"
Bedroom 3
4.69m x 3.24m | 15'5" x 10'8"
En Suite
2.64m x 1.12m | 8'8" x 3'8"

--- Reduced Head Height WC - Cloakroom

The floorplans depict a typical layout of this housetype. All dimensions are + or - 50mm and are not shown to scale. They are not intended to be used for carpet sizes, appliance sizes or items of furniture. These floorplans are a guide only and may be subject to change. Total area is approximate. For exact plot specification, details of external and internal finishes, dimensions and floorplan differences consult our Sales Executive. *Plot specific windows to 350 and 366. September 2022.



Landimore Park
Newport Pagnell Road
Hardingstone
Northamptonshire
NN4 6EF

Find us using what3words
///rational.baths.senses

01604 653341
LandimorePark.Sales@tiliahomes.co.uk
tiliahomes.co.uk

